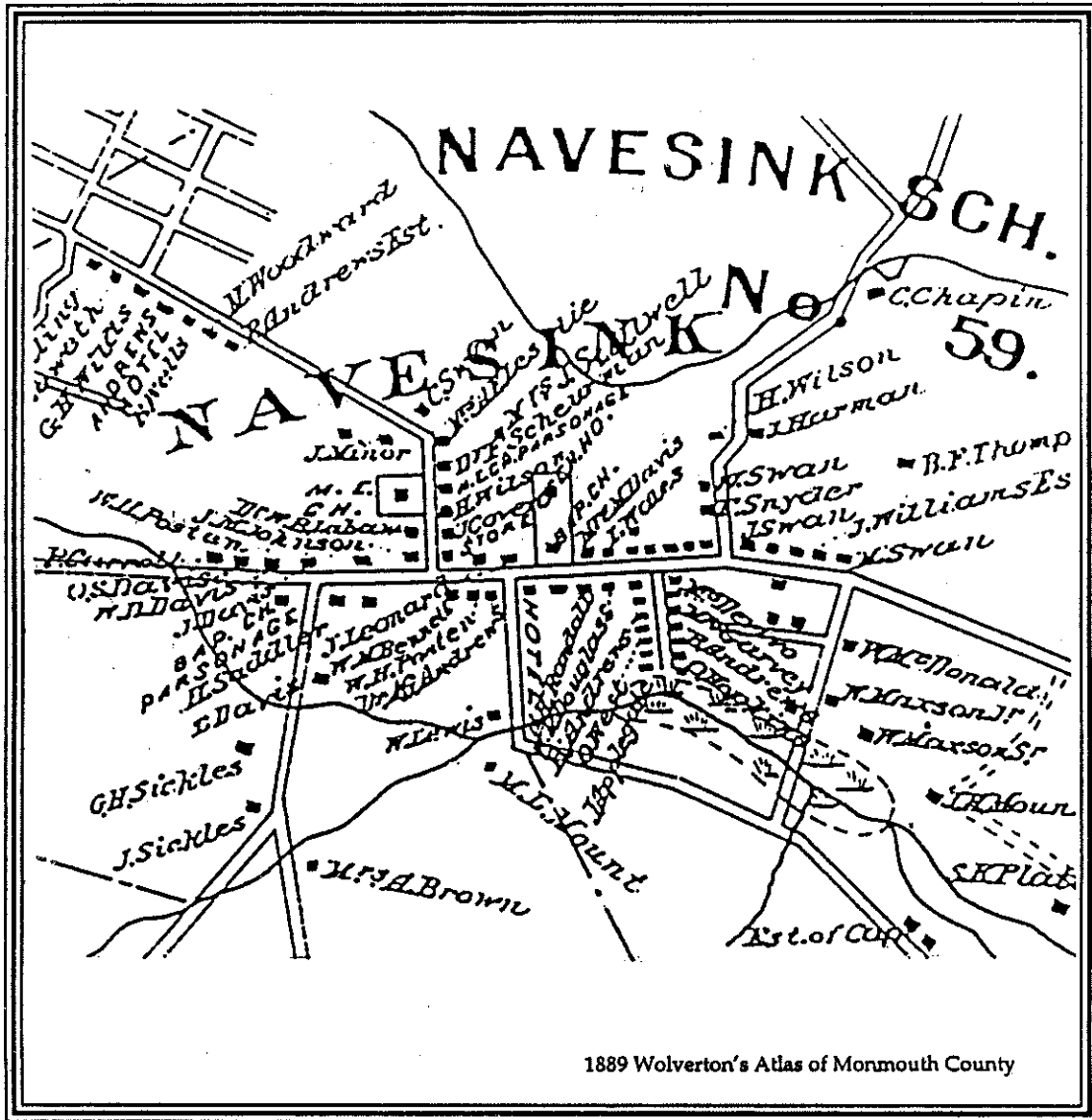


NAVESINK HISTORIC DISTRICT TOWNSHIP OF MIDDLETOWN



Middletown Landmarks Commission

An Inventory Report
for the
NAVESINK HISTORIC DISTRICT
MIDDLETOWN TOWNSHIP
MONMOUTH COUNTY, NEW JERSEY

prepared by:

Janet Foster

ACROTERION
Summit, New Jersey

in association with:

Carl E. Hintz, PP, AICP, CLA, ASLA
New Jersey Professional Planning License No. 1217

CLARKE • CATON • HINTZ
Trenton, New Jersey

May 1997

ACKNOWLEDGEMENTS

The Navesink Historic District survey report was funded by a Federal grant awarded through the N.J. Office of Historic Preservation to the Township of Middletown as a result of the successful grant application made by the township's Planning Department, under the leadership of Anthony Mercantante, Planning Director, with the assistance of Annemarie Hinds, Zoning Officer. The firm of Clarke, Caton, Hintz of Trenton, N.J. collaborated with Acroterion of Summit, N.J. to provide professional consulting services to the Middletown Landmarks Commission in the preparation of this survey report. The Landmarks Commission wishes to acknowledge with gratitude the contributions of Carl Hintz of Clarke, Caton, Hintz and Cynthia Hinson and Janet Foster of Acroterion, historic preservation consultants. The Commission is also most grateful to the Township Committee of Middletown for its important support of this project which will help foster the goal of saving our historic resources for the future.

Middletown Landmarks Commission

Mary Lou Strong, Chairman

Elaine Anderson, Vice Chairman

Mary Ann Kiernan, Secretary

Merion Curtiss

J. Robert Johnson

Richard Murray

Gerard Scharfenberger

Note: The cover map is from Wolverton's Atlas of Monmouth County, published by Chester Wolverton, 243 Broadway, New York, 1889, Plate 31.

NAVESINK HISTORIC DISTRICT

Description

The Navesink Historic District is generally located along Monmouth Avenue from just west of Browns Dock Road to the east side of Lakeside Avenue, and north on Navesink Avenue from the crossroads with Monmouth Avenue. Monmouth Avenue, which comprises the backbone of the district, is part of the King's Highway which is the most historic road in Monmouth County. Following the Battle of Monmouth on June 28, 1778, the British troops retreated down this road and encamped throughout the area while awaiting their evacuation from Sandy Hook.

The district is comprised of ninety-six contributing properties, including churches, a school, houses and associated outbuildings, a library, and commercial establishments. The slightly rolling landscape and wooded lots west of Monmouth Avenue give way to more open and level terrain east of Navesink Avenue. In contrast to other sections of Middletown Township where structures are placed on sizable lots and are not visible from the road, nearly all the buildings in the Navesink Historic District are located near the street. The siting helps to define the area as a close-knit village with a variety of establishments and residences.

Although permanent settlement of the Navesink area began as early as the late 18th century, the greatest numbers of houses were built during the mid- to late-19th century. Construction continued throughout the 20th century, but because the newer houses are traditional in design, they do not detract from the cohesive character of the district. In general, the earlier houses are more simple and less stylish than those that were built later in the 19th century. Numbers 167, 171, and 175 Monmouth Avenue are examples of this type of vernacular cottage. Number 197 Monmouth Avenue is a stylized, Greek Revival house of this early period. Noteworthy examples of mid-19th century structures are the houses at 179 Monmouth Avenue and 108 and 124 Navesink Avenue. The Craftsman style bungalows at 210 and 154 Monmouth Avenue are examples of contributing structures constructed in the first quarter of the 20th century.

Significance

The Navesink District is primarily a 19th century village which grew around a commercial center at the crossroads of Monmouth Avenue and Navesink Avenue. During the 19th century, Navesink was the largest town in the area and provided an economic base for the surrounding area as well as town residents. Facilities included a post office, three general stores, a feed and grain store, a saw mill, a grist mill, barbershops, taverns, hotels, blacksmiths, a wheel wright, a shoe store, and a stage coach proprietor. Several of the structures within the district housed businesses such as these, as seen on the 1873 Beers Atlas of Monmouth County.

Although buildings survive from the late 18th century, the primary significance of the Navesink Historic District lies in its continuing integrity as a rural 19th century village. The period of significance for the Navesink Historic District covers from the 18th century until 1930, when development effectively ceased for a decade, and the physical appearance of the district was largely set. The retention of so many structures from the past, in such close proximity to one other, provides a clear view into the appearance of the town one hundred years ago and establishes a distinctive village setting, quite distinct from the surrounding suburban development of the mid- and late-20th century.

GLOSSARY of TERMS

We have provided an explanation of some of the terms used in this report in order to enhance reader understanding.

Key - Any building, structure, site, or object that, in addition to meeting the criteria for status as "Contributing," retains an unusually high degree of historic architectural integrity, or that is associated with remarkable historic events or persons important to the history of the district.

Contributing - Any building, structure, site, or object that is a minimum of fifty years old and dates from a time period for which the district is significant, and is an integral component of the historic district zone because it represents a significant building type or method of construction, or is associated with persons or events significant in the history of the district.

Non-contributing - Structures or improvements that do not contribute to the significance of the historic district due to incompatible scale, massing, siting or materials, or that have been constructed within the past fifty years.

NRHP - The National Register of Historic Places is the nation's official list of properties that are significant in American history, architecture, archaeology, engineering or culture. **The Navesink Historic District was entered on the National Register in 1975.** Listing in the NRHP conveys recognition of the property's historic importance and confers a certain prestige to it. It also guarantees that public projects, such as road-widening, which might encroach upon or adversely affect the character of the historic structure, will be subject to review and comment in accordance with Section 106 of the National Historic Preservation Act of 1966.

MCHSI - The Monmouth County Historic Sites Inventory is a survey of the county's architectural and historic resources. The project identified and documented nearly 4000 buildings and structures which are significant and/or representative of the county's history, culture and architecture.

MTLC - The Middletown Landmarks Commission has a file for each of the approximately 600 individual historic sites identified in Middletown. Some are quite complete with pictures, history, newspaper clippings, deeds, while others have very little. The commission welcomes additions to its collection of historical information.

**NAVESINK HISTORIC DISTRICT
TOWNSHIP OF MIDDLETOWN, NEW JERSEY
LIST OF PROPERTIES**

Page 1 of 4

<u>SITE</u>	<u>ADDRESS</u>	<u>BLOCK / LOT</u>	<u>CLASSIFICATION</u>
1	216 Monmouth Avenue	B 840, L 6	Contributing
2	214 Monmouth Avenue	B 840, L 7	Contributing
3	212 Monmouth Avenue	B 840.01, L 1	Non-contributing
4	210 Monmouth Avenue	B 840.01, L 2	Contributing
5	208 Monmouth Avenue	B 840.01, L 3	Contributing
6	206 Monmouth Avenue	B 840.01, L 4	Contributing
7	204 Monmouth Avenue	B 840.02, L 1	Contributing
8	202 Monmouth Avenue	B 840.02, L 2	Non-contributing
9	200 Monmouth Avenue	B 840.03, L 48	Contributing
10	198 Monmouth Avenue	B 840.03, L 49	Contributing
11	196 Monmouth Avenue	B 840.03, L 50	House: Contributing Outbuilding: Non-contributing
12	194 Monmouth Avenue	B 840.03, L 51	Contributing
13	192 Monmouth Avenue	B 840.03, L 52	House: Contributing Outbuilding: Non-contributing
14	190 Monmouth Avenue	B 840.03, L 53.01	Contributing
15	188 Monmouth Avenue	B 840.03, L 1	Contributing
16	184 Monmouth Avenue	B 840.03, L 2	House: Contributing Outbuilding: Non-contributing
17	182 Monmouth Avenue	B 840.03, L 3	House: Contributing Outbuilding: Non-contributing
18	180 Monmouth Avenue	B 840.03, L 4	Contributing
19	178 Monmouth Avenue	B 840.04, L 1	Non-contributing
20	176 Monmouth Avenue	B 840.04, L 2	Non-contributing
21	174 Monmouth Avenue	B 840.04, L 3	Non-contributing
22	172 Monmouth Avenue	B 840.04, L 4	Non-contributing
23	170 Monmouth Avenue	B 840.04, L 5	Non-contributing
24	168 Monmouth Avenue	B 840.04, L 6	Contributing
25	164 Monmouth Avenue	B 840.04, L 7	House: Contributing Garage: Non-contributing
26	160 Monmouth Avenue	B 840.04, L 8	Contributing
27	158 Monmouth Avenue	B 840.04, L 9	Non-contributing
28	154 Monmouth Avenue	B 791, L 9	House: Contributing Outbuilding: Non-contributing
29	127 Monmouth Avenue	B 734, L 35	Contributing
30	131/133 Monmouth Avenue	B 734, L33, 32	Non-contributing
31	135 Monmouth Avenue	B 734, L 31	Contributing
32	137 Monmouth Avenue	B 734, L 30	Contributing
33	139 Monmouth Avenue	B 734, L 29	House: Contributing Outbuilding: Non-contributing

**NAVESINK HISTORIC DISTRICT
TOWNSHIP OF MIDDLETOWN, NEW JERSEY
LIST OF PROPERTIES**

Page 2 of 4

<u>SITE</u>	<u>ADDRESS</u>	<u>BLOCK / LOT</u>	<u>CLASSIFICATION</u>
34	141 Monmouth Avenue	B 734, L 28	Non-contributing
35	143 Monmouth Avenue	B 734, L 27	Contributing
36	145 Monmouth Avenue	B 734, L 26	Contributing
37	147 Monmouth Avenue	B 734, L 25	Contributing
38	Monmouth & Sears Ave. Navesink Library	B 726, L 42	Key
39	151 Monmouth Avenue Navesink School	B 726, L 41	Contributing
40	153 Monmouth Avenue	B 726, L XX	Contributing
41	155 Monmouth Avenue	B 726, L 33	Contributing
42	157 Monmouth Avenue	B 726, L 32	House: Contributing Garage: Non-contributing
43	159 Monmouth Avenue	B 726, L 31	Key
44	161 Monmouth Avenue	B 726, L 29	Contributing
45	161 Monmouth Avenue	B 726, L XX	House/Well House: Contributing Outbuilding: Non-contributing
45A	165 Monmouth Avenue	B 726, L 28	Non-contributing
46	167 Monmouth Avenue	B 726, L 27	Key
47	169 Monmouth Avenue	B 726, L 26	Contributing
47A	171 Monmouth Avenue	B 726, L 25	Contributing
48	171 Monmouth Avenue	B 726, L 24	Contributing
49	175 Monmouth Avenue	B 726, L 23	Contributing
50	Monmouth Avenue	B 726, L 45	Key
51	177 Monmouth Avenue	B 726, L 22	Contributing
52	101 Navesink Avenue Navesink General Store	B 726, L 21	Key
53	105 Navesink Avenue	B 726, L 20	Contributing
54	109 Navesink Avenue	B 726, L 19	Contributing
55	113 Navesink Avenue	B 726, L 18	House: Contributing Outbuilding: Non-contributing
56	117 Navesink Avenue	B 726, L 16	Contributing
57	121 Navesink Avenue	B 726, L 15	Contributing
58	125 Navesink Avenue	B 726, L 14	Contributing
59	201 Hillside Avenue	B 725, L 11	Contributing
60	124 Navesink Avenue	B 712, L 17	Contributing
61	120 Navesink Avenue	B 712, L 18	Contributing
62	116 Navesink Avenue	B 712, L 20	Key
63	112 Navesink Avenue	B 712, L 21	Key
64	108 Navesink Avenue	B 712, L 22	Key

**NAVESINK HISTORIC DISTRICT
TOWNSHIP OF MIDDLETOWN, NEW JERSEY
LIST OF PROPERTIES**

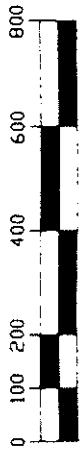
Page 3 of 4

<u>SITE</u>	<u>ADDRESS</u>	<u>BLOCK / LOT</u>	<u>CLASSIFICATION</u>
65	104 Navesink Avenue	B 712, L 23	House: Contributing Garage: Non-contributing
66	179 Monmouth Avenue	B 712, L 24	Key
67	181 Monmouth Avenue	B 712, L 24	Non-contributing
68	181 Monmouth Avenue	B 712, L 25	Non-contributing
69	183 Monmouth Avenue	B 712, L 26	Key
70	185 Monmouth Avenue	B 712, L 27	Contributing
71	187 Monmouth Avenue	B 712, L 28	Non-contributing
72 ¹⁹³	189 Monmouth Avenue	B 712, L 29, 30	Contributing
73 ¹⁹⁵	191 Monmouth Avenue	B 712, L 31	Non-contributing
74 ¹⁹⁹	193 Monmouth Avenue	B 712, L 33	Key
75 ¹⁹⁷	193A Monmouth Avenue	B 712, L 32	Contributing
76	195 Monmouth Avenue	B 712, L 34	House: Contributing Outbuilding: Non-contributing
77	197 Monmouth Avenue	B 712, L 35	Contributing
78	112 Lakeside Avenue	B 791, L 8	Contributing
79	105 Lakeside Avenue	B 840.04, L 10	Non-contributing
80	111 Lakeside Avenue	B 840.04, L 11	Contributing
81	103 Division Street	B 840.04, L 12	Contributing
82	107 Division Street	B 840.04, L 13, 14	Contributing
83	109 Division Street	B 840.04, L 15.01	Non-contributing
84	115/117 Division Street	B 840.04, L 17	Non-contributing
85	119 Division Street	B 840.04, L 18	Non-contributing
86	121 Division Street	B 840.03, L 4	Contributing
87	9 Sears Avenue	B 734, L 24	House: Contributing Outbuilding: Non-contributing
88	13 Sears Avenue	B 734, L 23	Non-contributing
89	21 Sears Avenue	B 734, L 22	Contributing
90	23 Sears Avenue	B 734, L 21	Non-contributing
91	25 Sears Avenue	B 734, L 20	Non-contributing
92	27 Sears Avenue	B 734, L 19	Non-contributing
93	28 Sears Avenue	B 726, L 47.02	Contributing
94	24 Sears Avenue	B 726, L 46	Contributing
95	20 Sears Avenue	B 726, L 44	Contributing
96	18 Sears Avenue	B 726, L 43	Contributing
97	230 Monmouth Avenue	B 837, L 27	Contributing
98	155 Brown's Dock Road	B 840, L 1	Contributing
99	224 Monmouth Avenue	B 840, L 2	Contributing
100	222 Monmouth Avenue	B 840, L 3	Contributing

**NAVESINK HISTORIC DISTRICT
TOWNSHIP OF MIDDLETOWN, NEW JERSEY
LIST OF PROPERTIES**

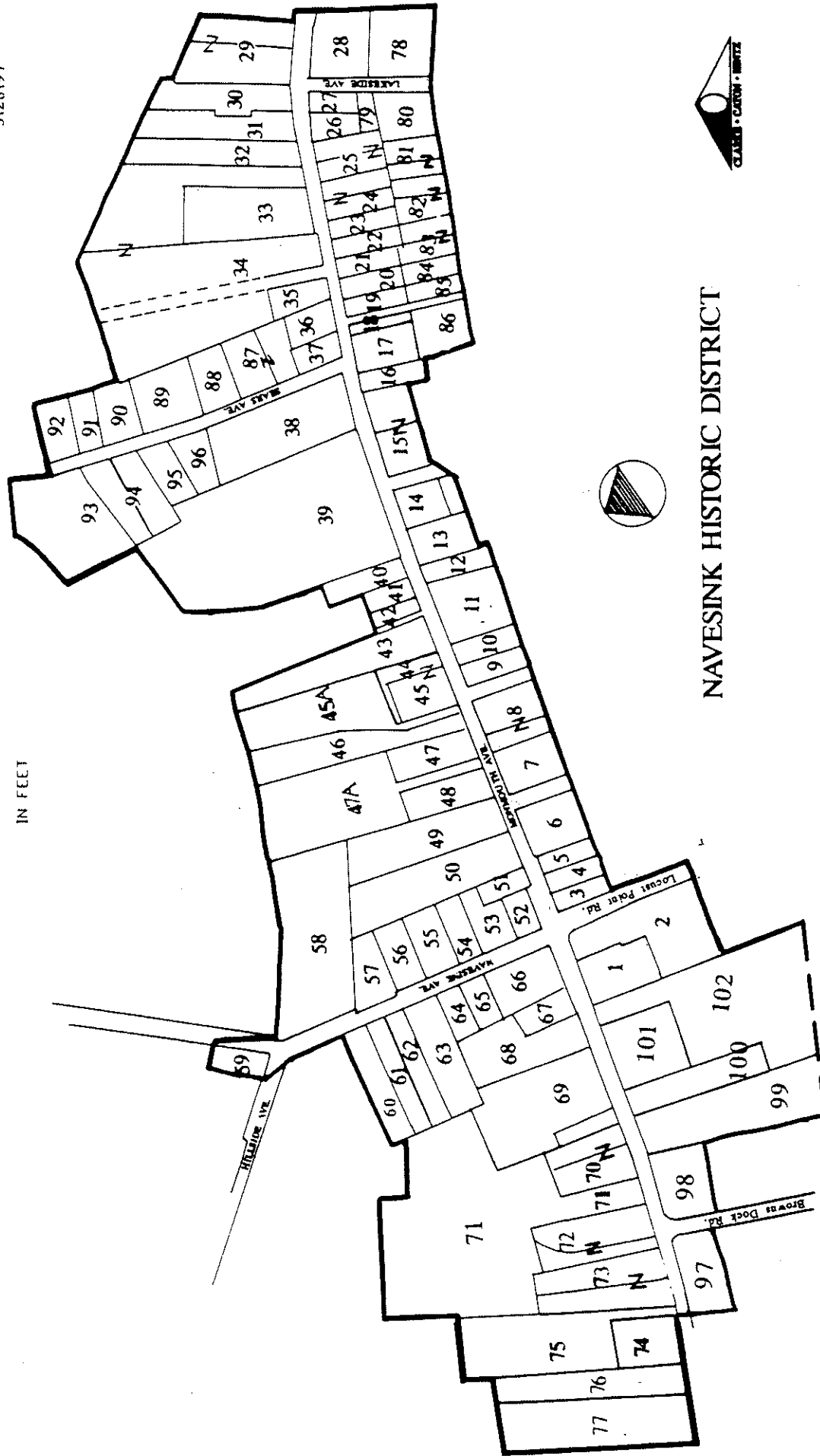
Page 4 of 4

<u>SITE</u>	<u>ADDRESS</u>	<u>BLOCK/LOT</u>	<u>CLASSIFICATION</u>
101	220 Monmouth Avenue	B 840, L 4	Non-contributing
102	220 Monmouth Avenue	B 840, L 5	Contributing



IN FEET

5128\97



NAVESINK HISTORIC DISTRICT



NAVESINK HISTORIC DISTRICT

Site #1

216 Monmouth Avenue

Block 840, Lot 6

Classification: Contributing

Reference: MTLC #167

This two story, gable-roof "T"-plan house is clad in aluminum siding and sits on a brick foundation. Stylistic details such as the center gable and paired brackets include the house in the Italianate Style which was popular in the years from 1850 to 1880. A pedimented entry placed beneath the projecting center gable is supported by turned columns and shelters the entry door. A shed-roof porch with chamfered columns and a square section balustrade is located at the southeast corner of the house at the intersection of the "T." Windows throughout the house are original 2½ double-hung sash and a small, triangular window is tucked beneath the center gable peak. A 2 story barn with a stone foundation and clad in vertical boards is located south of the house.



*Hendleman's
House
216 Monmouth
Avenue*

NAVESINK HISTORIC DISTRICT

Site #2

214 Monmouth Avenue

Block 840, Lot 7

Classification: Contributing

Reference: MTLC #166

This was the site of the Meadowbrook Dairy Farms which supplied milk for the Navesink area until the 1940s. Cows were raised on the surrounding acreage and the milk was bottled in the basement of the house.

This is a late-19th century, 2-1/2 story, "T"-plan structure that rests on a brick foundation. A one-story shed-roof addition is located at the back and the cross-gable roof of the main house is clad in asphalt shingles. A single-story porch located at the front of the house is supported on Tuscan columns. Vinyl siding covers the exterior walls, and new doors and 1/1 windows with false shutters have been installed.

Behind the house is a large barn and a fenced paddock that currently houses goats and a horse. The original portion of the "L"-shaped, gabled barn rests on a rubble stone foundation, and the building is clad with a combination of vertical wood siding and unpainted shingles. A newer workshop is located at the south side.

Mrs. Mrs. Beebe



NAVESINK HISTORIC DISTRICT

Site #2, continued

214 Monmouth Avenue

Block 840, Lot 7

Classification: Contributing

Reference: MTLC #166



NAVESINK HISTORIC DISTRICT

Site #3

212 Monmouth Avenue

Block 840.01, Lot 1

Classification: Non-contributing

The size of this three-bay, Colonial Revival cottage is increased by a 1-1/2 story addition at the west side. Both sections are clad with synthetic siding and are capped by steep gable roofs that contain gabled dormers with 6/6 sash windows. The 6-paneled front door is located at the center of the main block and is marked by a gabled portico carried on simple Tuscan columns. Located on either side of the entry are 9/9 sash windows flanked with shutters.



NAVESINK HISTORIC DISTRICT

Site #4

210 Monmouth Avenue

Block 840.01, Lot 2

Classification: Contributing

Reference: MTLC #163

This 1-1/2 story Craftsman bungalow-style house has a broad cross-gable roof and exposed rafter ends. The house is a good example of a style which became very popular in the 1910s and 1920s. On the front facade is a recessed front porch with shingled solid porch railings and tapered columns set on concrete supports. The structure is covered with synthetic shingle siding and sits on a concrete foundation. The front door containing small lights is centered on the facade, and is sheltered by the off-center porch. Replacement 6/1 double-hung sash windows are located throughout with the exception of a 6-light awning window at the peak of the cross-gable.

A single-story frame garage clad in horizontal boards is located behind the house. It has a gable roof and a multiple-light overhead door. It appears to be contemporary with the house.



NAVESINK HISTORIC DISTRICT

Site #5

208 Monmouth Avenue

Block 840.01, Lot 3

Classification: Contributing

Reference: MTLC #162

This 2-1/2 story house is clad in unpainted shingles and sits on a brick foundation. The Queen Anne Style is visible here in the cross-gable roof and shingles; the Italianate style is visible in the paired brackets and flat-roof porch. The overlap of these styles occurred in the 1880s, which is the likely date of construction for this house. A center chimney is constructed of brick. A flat-roof porch with square-section columns (some original) wraps around the north and west elevations, connecting to a single-story, flat-roof wing at the rear of the house. Original door and window surrounds are located throughout and the original double-leaf entry door with transom remains. Original 2/2 double-hung sash windows are located throughout the house; pointed 2/2 sash windows are located at the attic level.



NAVESINK HISTORIC DISTRICT

Site #6

206 Monmouth Avenue

Dr. Russell Andrew House

Block 840.01, Lot 4

Classification: Contributing

Reference: MTLC #160

This 2-1/2 story "L"-plan house is finished with wooden shingles. A wide frieze board encircles the house below the molded eaves. Within the corner of the front-facing "L", there is a shed-roofed porch supported by columns. The paneled entry door has a transom above. Two floor-length, 6/6 windows open onto the porch; functional louvered shutters flank the 6/6 sash windows throughout the rest of the first and second floors of the house. A pointed window in the attic gable accents the charming asymmetry of the house, very typical of vernacular architecture during the middle of the nineteenth century. An exterior brick chimney rises beside the west gable end. A 20th-century, single-story wing is located at the rear of the house.

The house was built about 1870 for Dr. Russell Andrew, the village physician for forty years. The Andrew family lived in the house for four generations, until 1960.



NAVESINK HISTORIC DISTRICT

Site #7

Stearns Hotel

204 Monmouth Avenue

Block 840.02, Lot 1

Classification: Contributing

Reference: MTLC #158

From 1861 to ca. 1912 this property was the site of the Stearns Hotel, however it is not clear who was responsible for the construction of the original building. Rev. Bromwell Andrew sold the property in 1861 for the substantial sum of \$3000, which indicates that a dwelling was probably on the lot at the time of the sale. Perhaps it was this building that Jacob Vannest enlarged for use as a hotel. This was known as the Riceville Hotel until it was sold to Josiah M. Stearns of New York in 1867 for \$5000. The hotel sat on five acres, including the "crops now standing on the premises". The last tavern license was issued in 1912, and seven years later fire destroyed part of the structure. A wing of the building was moved to Lakeside and Division Streets, and what remains is this 2-1/2 story building. Clad with unpainted shingles, this simple gable-roofed building is surrounded on three sides by a shed roofed porch that is supported by Tuscan columns carried on brick plinths. The facade is arranged in a five bay configuration; at the center of the front gable end is the main entry, flanked on either side by two 6/6 sash windows. Paired windows of the same type are located at the second level with a small multi-light unit at the peak. A shed addition at the rear contains a gabled portico over the entry.

At the rear of the property is a storage building with a gable roof and a shed addition at the west side. The building is clad with horizontal siding and a six-panel door and two four-light windows are located on the north, or front, elevation.

Marking the front boundary of the property are a pair of peanut stone gateposts that may date from the time period of the hotel.



NAVESINK HISTORIC DISTRICT

Site #8

202 Monmouth Avenue

Block 840.02, Lot 2

Classification: Non-contributing

Reference: MTLC #156

Although this house is believed to have been constructed in 1890, the building is so drastically altered that no remnant of the original structure remains visible. An "L" plan structure, the older section appears to be the end facing Monmouth Street. The gable form of this wing has been altered by the addition of a large shed wall dormer with a bank of 1/1 windows facing east. A two-story wing has been appended to the Stearns Avenue side of the house. This low-pitched gable is marked by a pent roof that divides the upper and lower stories, and paired 1/1 windows are located at both floors. An exterior chimney is constructed at the east end and the entry is located near the juncture of the two wings.



NAVESINK HISTORIC DISTRICT

Site #9

200 Monmouth Avenue

Block 840.03, Lot 48

Classification: Contributing

Reference: MTLIC #154

Although its appearance has been altered by a change of materials and the addition of a porch across the front, the original form of this 2-1/2 story front gable house remains apparent. The exterior is now clad with asbestos shingles, yet the slight projections that define the first and second floors, as well as the attic level, have been retained. Highlighting the facade is the shed roof porch which continues around the west side. This single-story porch is enclosed with a bank of 12-light windows and the entryway is marked by a gabled portico. At the second floor are three 2/2 sash windows flanked with false shutters. A brick chimney is located at the center of the structure and the house rests on a brick foundation.



NAVESINK HISTORIC DISTRICT

Site #10

198 Monmouth Avenue

Block 840.03, Lot 49

Classification: Contributing

Reference: MTLC #153

This 2-1/2 story, 3-bay vernacular house has a multiple-level roof with a center gable facing Monmouth Avenue and is covered with shingles. A wide frieze board and molded cornice encircle the house below the flared eaves of the gable roof. A porch with turned columns wraps around the north and east elevations and shelters a half-glass paneled front door centered beneath the center gable. The floor and ceiling of the porch are narrow boards. Paired replacement 1/1 and 6/6 sash windows are located throughout. Round-butt and straight shingles surround a 1/1 sash pointed window in center gable. Broad, flat interior brick chimneys pierce the east and west gable ends. The gable ends have paired quarter-circle windows at the attic level.

Based on its physical appearance, including the Queen Anne-style shingles, the center gable and the turned porch supports, the house was probably constructed in the last quarter of the 19th century. The files of the Middletown Landmarks Commission date it to about 1890.



NAVESINK HISTORIC DISTRICT

Site #11

196 Monmouth Avenue

Block 840.03, Lot 50

Classification: House - Contributing / Outbuilding - Non-contributing

Reference: MTLC #152

The three-bay structure appears to have been constructed originally with a simple gable roof; that design, however, has been modified with the introduction of a central gable that gives the house the appearance of a Gothic Revival cottage. Wide fascia boards and prominent gable end returns highlight the upper portion of the building. A shed-roofed porch supported on turned posts shelters the front and east sides, and the large addition at the rear is highlighted by "kicked" shingles located above a belt course separating the first and second levels. The upper floors of the house are clad with shingles and synthetic siding is located at the first floor. Exterior chimneys are located on the east elevation of both the main block and the addition. New 1/1 windows are located on either side of the centrally-located front door; above these are two 1/1 windows. All are flanked by false paneled shutters. The center window on the second floor has been removed, and the attic level is marked by a four-light unit.

A non-contributing, gable roofed, two-car garage is located at the west side of the property.



NAVESINK HISTORIC DISTRICT

Site #12

194 Monmouth Avenue

Block 840.03, Lot 51

Classification: Contributing

Reference: MTLC #151

This site, along with Sites #13 and #14, is believed to have been owned, and perhaps built by the Rev. Bromwell Andrew. A construction date of 1820 has been attributed to this house, although there is too little of the original fabric remaining to verify that information. It served during the late 19th century as the Depreaux barber shop.

A two-story, gabled structure with a single-story wing located at the east side, the house is clad with wood shingles. Two 6/6 double-hung sash windows at the upper level of the facade are flanked by board and batten shutters, while the fenestration at the first floor consists of a projecting bay window supported on short brackets which extend to grade.

The garage at the rear of the property appears to have been constructed in two phases. The initial gabled section has had a shed roofed addition appended at the east side. Each section contains a paneled overhead garage door and the building is clad with synthetic siding.



NAVESINK HISTORIC DISTRICT

Site #13

192 Monmouth Avenue

Block 840.03, Lot 52

Classification: House: Contributing / Outbuilding: Non-contributing

Reference: MTLC #150

This 2-story, gable-roof vernacular house takes the block-and-wing form common to regional vernacular architecture of the 18th and early 19th centuries. The eastern portion is a broad, 3 bay, gable roof structure. The western portion, which is narrower and lower in every dimension than the eastern portion, was added during the 1970s. Both are clad with horizontal wood siding. A single-story porch, which shelters the entrance to the house, is located on the facade of the western portion. The eastern portion was originally a three-bay, side-hall plan, but the entrance has been moved to the west elevation. A shed-roof, single-story addition is located at the east gable end of the house. Six/six sash windows throughout are flanked by functioning louvered shutters.

A non-contributing frame shed is located to the rear of the house.

Although the information in the MTLC files indicates that the house was built in 1850, it is believed to have started as a smaller cottage, and architecturally it appears to be older. The files note that the roof framing was completed without a center ridgepole, a construction practice usually associated with 18th century and early nineteenth century building technology. Although its absence is not definitive, together with other visible historic fabric, the date of construction for this house should be probed further, to verify or disprove an early 19th century date.



NAVESINK HISTORIC DISTRICT

Site #14

190 Monmouth Avenue

Block 840.03, Lot 53.01

Classification: Contributing

Reference: MTLC #149

This may have been one of a group of houses owned, and possibly constructed by, Reverend Bromwell Andrew which are shown on a mid-19th century map of the area. The size of this two-story, three-bay house has been increased by the addition of a single-story wing at the west side. A one-story, hip roof porch, supported on square-section posts and enclosed with a simple balustrade, extends across the main section of the building. The house is clad with wood shingles and the fenestration consists of new 6/6 windows flanked by paneled shutters. An exterior brick chimney is located on the east elevation.

A small playhouse located at the back of the lot is non-contributing.



NAVESINK HISTORIC DISTRICT

Site #15

188 Monmouth Avenue [SE Corner of Latham and Monmouth Avenues]

Block 840.03, Lot 1

Classification: Contributing

The house is a much-altered, two story Greek Revival Style cottage with a gable roof. Covered with clapboards, the house sits on a brick foundation. It appears to have originally had an entrance in the center bay of the 3-bay facade; a bay window has replaced the entrance and the new entrance is located on the west elevation underneath an unenclosed breezeway connecting the house to a single-story gable-roof garage. The bay window is flanked by sash windows with paneled shutters decorated with crescent cut-outs. The Greek Revival attribution is apparent in the wide frieze board across the facade, and molded cornice forming gable end returns. Six/six original sash windows are located throughout the house. A replacement exterior brick chimney rises on the east gable end. Based on its physical appearance, the house was probably constructed in the second quarter of the 19th century, and is one of a group of several similar structures which are a notable and unique feature of Navesink. A single-story, shed-roof wing located to the rear of the house has an exterior brick chimney at the southwest corner. A brick well curb with a gable roof hood is located to the rear of the house.



NAVESINK HISTORIC DISTRICT

Site #16

184 Monmouth Avenue

Block 840.03, Lot 2

Classification: House - Contributing / Outbuilding - Non-contributing

Originally constructed as a 1-1/2 story, five-bay, side gabled house with a shed roof addition at the rear, this building has undergone numerous enlargements and modifications. The facade has been altered so that the building now reads as a four-bay structure at the first floor, with three bays above. New 1/1 windows have replaced the original fenestration and a single-story, flat-roofed porch carried on square posts has been added across the facade. A two-story gabled wing has been added at the rear and the entire structure is clad with unpainted imbricated shingles. A large exterior brick chimney is located on the west elevation.

A non-contributing garage/pool house is located at the rear of the property.



NAVESINK HISTORIC DISTRICT

Site #17

182 Monmouth Avenue

Block 840.03, Lot 3

Classification: House: Contributing / Outbuilding: Non-contributing

This 2-1/2 story, 3-bay, center hall house has characteristics of the popular mid-19th century Italianate style, in its bracketed eaves and shallow pedimented window lintels. However, the extremely narrow front door topped by a simple transom, paired end chimneys, the symmetrical facade, and the broad gable roof suggest that the Italianate decorations may have been applied to a much earlier house, more influenced by the late 18th century Georgian style. The house is covered with asbestos-shingle siding. A single-story, hipped-roof porch is located on the west elevation. The screened porch is supported by turned columns.

A mid-20th century frame garage with an overhead door is located behind the house.



NAVESINK HISTORIC DISTRICT

Site #18

Navesink Hall

180 Monmouth Avenue

Block 840.03, Lot 4

Classification: Contributing

The 2-story gable-roof building with exposed rafter ends is sided with asphalt shingles over vertical boards and sits on a foundation of local peanut stone. The gable end of the structure faces the road and a smaller gable-roof entry marks the entrance on Monmouth Avenue. The entrance is flanked by a pair of tall, rectangular window openings. Window and door openings are boarded-up on all elevations, except for the south elevation, where a vertical board door and modern hardware are located. There are four bays on the east and west elevations, with a doorway located between the third and fourth bays on the east elevation.

In 1878 the Navesink Public Hall Association was formed to provide the community with its own town hall which would be used for "public meetings and other lawful purposes." It was used for many years as a public meeting space, as a polling place and for various entertainments. It is now used for storage.



NAVESINK HISTORIC DISTRICT

Site #19

178 Monmouth Avenue

Block 840.04, Lot 1

Classification: Non-contributing

The gable roof of this single-story cottage is topped by a heavy, over-size shed dormer with paired 1/1 windows. The building is clad with steel siding and 1/1 windows with false shutters light the west elevation. An aluminum awning covers the front entry which is reached by a set of three concrete steps.

A small storage shed is located at the rear of the property.



NAVESINK HISTORIC DISTRICT

Site #20

176 Monmouth Avenue

Block 840.04, Lot 2

Classification: Non-contributing

This gabled building was under construction at the time of the survey. A shed roof porch supported on square posts shelters the first floor of the facade. A pair of 8/8 light windows is located beside the front door which is framed with sidelights. An over-scaled, gabled wall dormer complete with a Palladian-type window marks the upper level of the house. To either side of this are small, four light casement windows. To either side of this are small, four light casement windows.



NAVESINK HISTORIC DISTRICT

Site #21

174 Monmouth Avenue

Block 840.04, Lot 3

Classification: Non-contributing

This two-story, three-bay house is a typical "contractor's Colonial." The shallow gable roof is covered with asphalt shingles and the walls are clad with synthetic siding. The front door frame is fashioned to replicate a broken pediment and the 1/1 windows are flanked with false shutters.



NAVESINK HISTORIC DISTRICT

Site #22

172 Monmouth Avenue

Block 840.04, Lot 4

Classification: Non-contributing

This single-story bungalow is sheltered by a deep porch, the shed roof of which is supported on square posts and exhibits exposed rafter ends. The porch is enclosed with a simple balustrade of square-section balusters. The building is clad with both horizontal novelty siding and plywood. Elongated 2/2 windows are located on the east side of the facade. An exterior brick chimney for a furnace is located at the east side.



NAVESINK HISTORIC DISTRICT

Site #23

170 Monmouth Avenue

Block 840.04, Lot 5

Classification: Non-contributing

The lower level of this two story, front gabled house is marked by a projecting, hip roofed addition, at the center of which is the front door. To the west is a four part, bow-front window and a single 1/1 window with false shutters is located on the east side of the facade. Two 1/1 windows with false shutters mark the upper level. The building is clad with painted shingles and an exterior brick furnace chimney is located on the west elevation.



NAVESINK HISTORIC DISTRICT

Site #24

168 Monmouth Avenue

Block 840.04, Lot 6

Classification: Contributing

This 3-story, 3-bay house has stylistic features attributed to a transitional Shingle Style/Colonial Revival style. These stylistic trends overlapped c. 1880-1900, which is the probable construction date for the house. The steeply pitched, gable roof structure sits on a brick foundation. A cornice encircles the house, creating pedimented gable ends. The attic level of the gable ends has a pent eave supported by kneebraces above the attic window. A pedimented entry porch shelters a double door with lattice windows in the top half of the doors. A single-story hipped roof porch is located at the west gable end, supported by square columns and cross-braced railings. Two/two sash windows flanked by nonfunctional screw-on shutters are located throughout the house. The four gate posts along Monmouth Avenue are constructed of the local peanut stone. The house's architectural integrity has been damaged by the replacement of original shingles with vinyl siding, and the alteration of the front entry to side-by-side aluminum screen doors. A porch may have once wrapped around the first floor; portions remain on the west side and as a pedimented portico over the front door.

The former carriage house, now a garage, retains exceptional integrity for an outbuilding. The cross-gabled roof contains a cross-braced door for hauling hay up to the loft. The wooden siding of the outbuilding appears to be original, although the vehicle bay doors are replacements.



NAVESINK HISTORIC DISTRICT

Site #25

164 Monmouth Avenue

Block 840.04, Lot 7

Classification: House - Contributing / Garage - Non-contributing

Despite some alterations, this house retains much of its original appearance. The 2-1/2 story, front gable structure has been enlarged by the addition of a single-story room across the facade. This addition and the remainder of the building are clad with asbestos shingles. Four multi-light windows are evenly spaced across the addition, and two multi-light windows mark the second floor; all are flanked with false louvered shutters. The narrow eaves of the gable roof continue across the facade at the attic level to create a shallow pent. A circular vent marks the attic level.

A front gabled two-car garage at the east side of the property is non-contributing.



NAVESINK HISTORIC DISTRICT

Site #26

160 Monmouth Avenue

Block 840.04, Lot 8

Classification: Contributing

This 2-1/2 story, Queen Anne Style house has a gable roof with a center gable and is covered with square shingles. This house style was most popular from 1880 to 1910. The 5-bay house has a center entry sheltered by a center-gabled porch. The most notable feature of the facade is the shed-roofed porch running the length of the facade, which is supported by turned supports with jigsawed brackets. Replacement 1/1 windows are located at the first floor and original 2/2 windows are located at the second; they are flanked by functional louvered shutters. Gable dormers are located at either side of the center gable. Rounded shingles are located in the cross-gable and the dormers. A brick chimney pierces the west gable end of the roof and an exterior chimney rises at the east end. The two gate posts are constructed of brick and peanut stone.

The house is very similar to 198 Monmouth Avenue, (Navesink Historic District Site #10). The two are of a similar age, and may well have been built by the same contractor.



NAVESINK HISTORIC DISTRICT

Site #27

158 Monmouth Avenue

Block 840.04, Lot 9

Classification: Non-contributing

The gable end of this two-story house faces Monmouth Avenue. The flat facade is relieved by the addition of a shed-roofed porch that covers the western half of the elevation, and shelters the centrally-located front door and the west window. The porch roof is supported on square section posts, and the enclosed balustrade is clad with synthetic siding, like the remainder of the house. Fenestration consists of 1/1 windows with false louvered shutters.



NAVESINK HISTORIC DISTRICT

Site #28

154 Monmouth Avenue

Block 791, Lot 9

Classification: House: Contributing / Outbuilding: Non-Contributing

This 1-1/2 story, hipped-roof, Craftsman-style bungalow is covered with narrow clapboards. This style was most popular during the 1910s and 1920s. The roof has wide, overhanging eaves with exposed rafter ends. A truncated dormer with a tripartite window is centered over the north facade. The undercut porch at the northwest corner of the house, which is supported by tapered supports on brick piers, shelters the front entrance. Tapered porch posts mark the entrance to the porch. The configuration of the three windows on the facade is typical of the style: a larger center window with transom lights across the top and narrow windows on either side. Six/one windows are located throughout the remainder of the house. An exterior brick chimney rises from the east elevation. The house does not appear very large from Monmouth Avenue, but it extends along Lakeside Avenue, indicating that there may have been additions to the original structure.

A 3-car garage is located behind the house, fronting Lakeside Avenue. This 1-1/2 story structure is constructed of concrete blocks and has a gable roof with exposed rafter ends.

This house was a pre-cut house marketed by Sears, Roebuck & Company between 1925 and 1929 as "The Hamilton". As the advertising for the house in the Sears catalog stated, "Truly the Hamilton is a model of appearance, convenience, and price." It sold for \$2,084 to \$2,124. This building in Navesink is well-preserved, and a fine example of the houses-by-mail which were a popular American architectural phenomenon in the 1920s.



NAVESINK HISTORIC DISTRICT

Site #29

Tompkins House

127 Monmouth Avenue

Block 734, Lot 34

Classification: Contributing

This 2-story, side-gable, vernacular style house is covered with clapboards. Based on its physical appearance, specifically the windows, the house appears to have been built about the middle of the 19th century. It is a simple vernacular house form, with a straightforward arrangement of doors and windows, and no additional decorative elements. This 2 over 3 bay house has a side-hall plan. A shed-roof porch with square-section columns shelters the entrance. Two/two windows with original surrounds are located throughout and are flanked by functioning louvered shutters. An interior brick chimney pierces the west gable end. A single-story wing is attached to the west end of the house and a vertical-board shed is attached to the east end. The house is set well back from the street in a large lot. A frame well-curb with a gable roof is located east of the house.

This house was built around 1844 by Daniel ("Governor") Tompkins who moved to Navesink with his family at that time. He was the son of Augustus D. Tompkins who served as governor of New York and Vice President under James Monroe. Daniel Tompkins opened the first general store in Locust, and was the builder of All Saints' Memorial church in 1864-1866. His son Elisha befriended the poet Walt Whitman during the Civil War, and Whitman later became a frequent visitor to the Tompkins house. In 1890 the Central Railroad of New Jersey acquired the right-of-way through the property which necessitated the moving of the house down the hill to its present location.



NAVESINK HISTORIC DISTRICT

Site #30 & 31

131 & 133 Monmouth Avenue

Block 734, Lots 33, 32

Classification: Non-contributing

Located behind a split-rail fence is this 1-1/2 story, front gabled cottage clad with asbestos shingles. The front of the poorly maintained house is nearly obscured by a porch that has been enclosed with translucent plastic panels above a sided base. A four-light window is located at the peak of the front gable. A brick chimney rises at the rear.

A non-contributing ranch house of 1960's vintage is also located on the property. It is not pictured.



NAVESINK HISTORIC DISTRICT

Site # 32

135 Monmouth Avenue

Block 734, Lot 31

Classification: Contributing

Much of the facade of this 1-1/2 story side-gabled house, which probably dates from the early to mid-19th century, is sheltered by a flat-roofed porch supported on square-section posts and enclosed by a simple balustrade. The house rests on a fieldstone foundation, and exhibits evidence of having been extended from its original three-bay size. A gabled dormer is located at the center of the roof directly above the front door. The house is clad with painted wood shingles and fenestration throughout consists of new 1/1 windows.

At the rear of the property is a dilapidated garage with a gable roof and a large gabled dormer with paired 6/6 windows. New doors exist in the west half of the facade, while a pair of original vehicle doors, with four lights over a paneled base, are located at the east.



NAVESINK HISTORIC DISTRICT

Site #33

139 Monmouth Avenue

Block 734, Lot 29

Classification: House: Contributing / Outbuilding: Non-contributing

This 2-1/2 story vernacular house has an unusual arrangement of facade openings - 4 over 6 bays, which may suggest that the second story is an addition to an earlier, single-story house. This gable-roofed structure is sided in clapboards with a wide frieze and gable end returns. A two-story wing is located at the rear of the house. The single-story, hipped-roof porch sheltering the narrow entry door is supported by round columns. A wood porch floor remains. An interior brick chimney pierces the west gable end. Non-functional, screw-on shutters flank 6/6 sash windows throughout. A frame garage is attached to the house via an enclosed breezeway at the northwest corner. A brick well curb with hipped roof is located west of the house.

The present appearance of the house suggests a construction date in the 19th century, although if interior investigation verifies that the second floor is an addition, the first floor may be much older, perhaps even 18th century.



NAVESINK HISTORIC DISTRICT

Site #34

141 Monmouth Avenue

Block 734, Lot 28

Classification: Non-contributing

This is the site of Navesink Hook & Ladder Co., a Colonial Revival style firehouse. The ground floor of this two-story, side gabled structure contains three overhead garage doors at the east side of the facade. The double-leaf entry, located at the west side, is protected by a flat-roofed portico carried on square posts capped with a square-section balustrade. Four pairs of multi-light windows flanked with screw-on shutters are evenly spaced across the facade at the upper level. A cupola marks the center of the asphalt-shingled roof and brick chimneys are located at each end of the structure. The exterior is clad with brick veneer and the building is set far from the road, at the end of a long, wide driveway.

Navesink Hook & Ladder Co. No. 1 was founded on May 1, 1886 in the Parish House of All Saints' Memorial Church in Navesink. That year the first Firemen's Fair was held in the Navesink Hall building (Site # 18) and enough money was raised to rent space at the Stearns Hotel for a meeting room and Truck House. In 1891 the first Fire House was built across the street from the present building. The company purchased its present site in 1929 and in 1930 opened its new 2 story, 2 bay Fire House. In 1969 the present fire house was constructed.



NAVESINK HISTORIC DISTRICT

Site #34 (continued)

137 Monmouth Avenue

Block 734, Lot 30

Classification: Contributing

This is a vacant lot which contributes to the historic setting of the district.

NAVESINK HISTORIC DISTRICT

Site #35

143 Monmouth Avenue

Block 734, Lot 27

Classification: Contributing

Located behind a low wrought iron fence is this two-story, three bay, side gable house with a 1-1/2 story extension at the rear. A hip roof porch, enclosed with multi-light, floor-to-ceiling windows on either side of the centrally-located door, had been added across the facade. The main body of the building is clad with painted shingles; located at the attic level of the gables is vertical siding with a scalloped lower edge. Fenestration consists primarily of 2/2 windows; those at the second floor of the facade are capped with metal awnings. A bay window with a copper roof is located on the east elevation and an interior brick chimney is located at the center of the building.



NAVESINK HISTORIC DISTRICT

Site #36

145 Monmouth Avenue

Block 734, Lot 26

Classification: Contributing

This 2-story, 5-bay, gable-roof vernacular house is covered with shingles and sits on a stone foundation. Based on its physical appearance, specifically the 2/2 windows, the house appears to have been built after the middle of the 19th century. A hipped-roof porch running the length of the front facade is supported by round columns and shelters the centered half-glass door. The porch has a wood floor and a molded cornice. A brick exterior chimney rises beside the west gable end. Original 2/2 sash windows are located throughout although on the first floor facade and side elevations they are full-story height; the second floor facade windows are half-height.



NAVESINK HISTORIC DISTRICT

Site #37

147 Monmouth Avenue

Block 734, Lot 25

Classification: Contributing

This austere three-story house is constructed in the "Four Square" style popular during the early years of this century. The hipped roof exhibits slightly flared eaves, and is marked by gabled dormers at both the front and back. A hip roofed porch, carried on simple square posts, extends across the facade and a portion of the west elevation. Paired 1/1 windows are located to the west of the front entry, and two widely-spaced, 1/1 windows mark the second floor. The house is now clad in asbestos shingles. A bay extension is located on the west elevation and an exterior brick chimney is constructed at the rear.



NAVESINK HISTORIC DISTRICT

Site #38

Navesink Library

Monmouth Avenue & Sears Avenue

Block 726, Lot 42

Classification: Key

The Township's first library building, constructed in 1917, is a fine example of the Colonial Revival style. The two-story, hipped-roof structure, now clad in aluminum siding, has a rectangular plan and sits on a concrete foundation. The Colonial Revival Style is expressed in the building's symmetrical facade, which is centered on a door surround in the Federal/Adamesque style, and the delicate detailing in the applied pediment, pilasters, and fanlight. A plaster plaque with a raised relief festoon is located above the door. Each elevation is marked by tall, 36-light, double-hung sash windows. A brick chimney with an exposed hearthback is located on the east facade. A single-story wing extends from the rear of the building.

The Navesink Library Association was founded in 1914 by a committee of residents who wished to bring books, music, lectures and wholesome recreation to the town. The Navesink Library, which was the first library in Middletown, was first housed in the old Baptist Church building, but rapidly outgrew it. In 1917 Mrs. Ellen W. Duryea of New York gave a new library building to the community as a memorial to her husband, Herman B. Duryea, a noted sportsman who had spent his boyhood in the Navesink vicinity. William Lawrence Bottomley of New York was the architect, and it was built by local contractors Quakenbush & Leonard for a cost of \$20,000. It had a main reading room, a gymnasium, kitchen, stage and a bowling alley in the basement. In 1921 the Middletown Public Library was founded and housed its first collection of books in this building, which is now a branch of the township library.



NAVESINK HISTORIC DISTRICT

Site #39

Navesink School

151 Monmouth Avenue

Block 726, Lot 41

Classification: Contributing

Constructed in 1940, this Colonial Revival style school building is one story in height. The side gabled classroom wings step back slightly from the centrally located, front gabled entry portico. The double doors are topped by a multi-light transom, above which is a bull's eye window. A copper-roofed cupola topped with a weather vane marks the center of the school. The exterior is clad with brick and the end of each wing is highlighted with brick quoins. The prominent architraves of the elongated multi-light windows are painted white and above each window is a prominent keystone. False brick chimneys are located at both ends of the building, and the roof is covered with slate. A boxy new wing has been constructed at the west side.

In 1921 this property was acquired by Brigadier Gen. and Mrs. William Barclay Parsons, prominent, civic-minded citizens who were summer residents of nearby Locust. Upon the death of her husband, Mrs. Parsons made a gift of the property to the community for a new school building. A stone marker embedded in the school's front lawn records this gift, "The Land on which this Building stands was given in memory of William Barclay Parsons - 1933." (Gen. Parsons was a brilliant engineer and was responsible for building New York City's first subway.) Under the terms of the deed, the Board of Education had 10 years in which to construct the school. In 1940 the cornerstone was laid and construction completed in 1941. A wing was added in 1961.



NAVESINK HISTORIC DISTRICT

Site #40

153 Monmouth Avenue

Block 726, Lot 34

Classification: Contributing

Reference: MTLC #144

Constructed in the years around the turn of this century, this house is typical of many in the Navesink area--two stories in height with a gable roof and a three bay arrangement of the facade. Sheltering the first floor is a shed-roof porch supported on square posts and enclosed with simple, square-section balusters. The 6/6 sash windows flanked with louvered shutters are symmetrically arranged around the centrally located entry. A boxy two-story addition with a flat roof has been constructed at the rear and the entire structure is clad with vinyl siding.



NAVESINK HISTORIC DISTRICT

Site #41

155 Monmouth Avenue

Block 726, Lot 33

Classification: Contributing

Reference: MTLC #148

This is a simple, 1-1/2 story Queen Anne style cottage with numerous additions at the rear. A new bay window is located in the front gable which is highlighted by a wide, paneled frieze board that continues across the facade at the attic level creating a tympanum. A three-sided bay on the east elevation contains 2/2 sash windows. The shed roof of the porch is supported on short round columns that rest on the enclosed balustrade, and a new entry vestibule intrudes into the porch area. Unpainted shingles cover the body of the house as well as the low walls of the porch balustrade. A chimney for a furnace is located at the center of the house and the asphalt-shingled roof is pierced by a gabled dormer on the east elevation.



NAVESINK HISTORIC DISTRICT

Site # 42

157 Monmouth Avenue

Block 726, Lot 32

Classification: House - Contributing / Garage - Non-contributing

Reference: MTLC #143

The gable end of this two-story house faces Monmouth Avenue and a single-story shed roof extension has been added to the rear. Across the facade is a shed roof addition marked by a door and paired 1/1 windows. Two 1/1 windows light the second floor of the facade and all windows are flanked by false louvered shutters. An exterior brick chimney is located on the west elevation.

A one-car, concrete block garage at the rear of the property is non-contributing.



NAVESINK HISTORIC DISTRICT

Site #43

C.L. Lufburrow House

159 Monmouth Avenue

Block 726, Lot 31

Classification: Key

Reference: MTL C #~~44~~4; MCHSI #1331-4-2: NRHP #3
#141

This 1-1/2 story, 5-bay cottage is sided in clapboards and sits on a stone foundation. The high wall between first floor window and facade eaves, the broad gable end, with eaves flush with the clapboard wall, and the center-entry plan all are characteristic of the 18th and early 19th century vernacular dwelling common in northern New Jersey. Two pedimented dormers with 2/1 windows are located within the gable roof. A shed-roof porch runs the length of the facade and shelters the center entry door constructed of vertical boards. The porch is supported by turned columns and jigsawn supports over a slate floor. Interior brick chimneys pierce the east and west gable ends. Six/six windows on the first floor have molded surrounds and 4/2 windows are located at the attic level of the gable ends. Functional panel shutters are located on the first floor. A single-story shed wing located to the west appears to have been an early addition to the house; a 2-story wing is located at the back of the house. A barn is located behind the house. A non-contributing modern brick and slate wall is located at the street line.

The 50/100ths of an acre on which this house sits can be traced back to May 11, 1835 when David Gordon sold it to Isaac Doughty for \$13. This evidence would suggest that Isaac Doughty was the builder. The house came to be known as the C.L. Lufburrow house in the late 19th c. when it was bought by Charles Lufburrow Sr. for \$1800 as a retirement home in the village. He had divided his large farm in Locust between his two sons, Joseph and Charles, Jr. in 1872 when he bought this house. From 1855 to 1872 it was owned by Capt. William H. Robbins, a riverman and the oldest captain on the Navesink at his death.



NAVESINK HISTORIC DISTRICT

Site #44

161 Monmouth Avenue

Block 726, Lot 30

Classification: Contributing

This is the side lot for Site #45.

NAVESINK HISTORIC DISTRICT

Site #45

161 Monmouth Avenue

Block 726, Lot 29

Classification: House and well house - Contributing / Shed - Non-contributing

Reference: MTLC #128 *105 Navesink Ave is also listed as 128*

Although its appearance has been modified by the application of new asbestos siding, the original form of this building remains intact. An imposing 2-1/2 story Shingle Style house, it was constructed during the third quarter of the nineteenth century in a cross gable form with flared eaves. The second floor slightly overhangs the first, and their juncture is marked by a small flaring of what was originally a shingled surface. A bank of four new 6/6 light windows has been installed at the first floor, and except at the attic level, new units replace the original windows throughout the remainder of the house. The original pointed arch window remains intact at the attic where it is surrounded by fish-scale shingles in an area enclosed by the gable end returns and a band of horizontal crown molding. Tucked into the juncture of the two wings is the front entry which is sheltered by a gabled portico supported on attenuated columns.

The severely deteriorated vehicle shed located at the rear of the property is beyond repair and therefore considered non-contributing. Also located behind the main building is a small well house with a hip roof. It is contributing.



NAVESINK HISTORIC DISTRICT

Site #45A

165 Monmouth Avenue

Block 726, Lot 28

Classification: Non-contributing

Located at the end of a long driveway is this single-story ranch house. Constructed in a telescoping arrangement, it is clad with synthetic siding and asphalt shingles cover the gable roof. A one-car garage is located at the east end.



NAVESINK HISTORIC DISTRICT

Site #46

Surry House

167 Monmouth Avenue

Block 726, Lot 27

Classification: Contributing

Reference: MTLC # 139; MCHSI #1331-4-24

This 1-1/2 story cottage is sided with clapboards and sits on a stone foundation. Based on its physical appearance and materials, the house was probably constructed in the last quarter of the 18th century or early 19th century. The 3-bay, side-hall plan house is sheltered by a shed-roof porch with supports and jigsaw brackets. A single-story gable-roof wing is attached to the west gable end and contains one window and a 9-light, vertical-board door. Another single-story wing is attached to the east gable end. Original 6/6 windows with original surrounds are located at the first floor and are framed by functioning shutters. Two-light kneewall windows are placed beneath the eaves on the facade. One interior brick chimney pierces the east gable end of the main section and a second brick chimney is located in the west end of the west wing. A peanut-stone well base is located south of the house near the ruins of a frame shed.



NAVESINK HISTORIC DISTRICT

Site #47

169 Monmouth Avenue

Block 726, Lot 26

Classification: Contributing

Reference: MTLC #138; MCHSI #1331-4-23

This 2-1/2 story Queen Anne style house is covered with vinyl siding. This style was popular 1880-1910, and local tax records indicate that the house was constructed about 1900. The cross-gable house has a pedimented shed-roof porch with a solid balustrade. The porch that wraps around the south and west elevations shelters the entrance to the side-hall plan interior. A 2-story bay window on the facade pierces the porch roof. Original 2/2 sash windows are located throughout the house and are framed by screw-on shutters. A single-story addition is located at the east elevation.



NAVESINK HISTORIC DISTRICT

Site #47A

171 Monmouth Avenue

Block 726, Lot 25

Classification: Contributing

Reference: MTLC #139

This severely dilapidated barn/work shop is located far off the road, behind Site #47. Located at the center of the building is a front gabled section, flanked on either side by one-story wings with side gable roofs. A single garage door is located at the center, with an access door to the attic loft above. The fenestration consists of 1/1 windows. Vines have overgrown the structure which is in imminent danger of collapse.



NAVESINK HISTORIC DISTRICT

Site #48

Van der Veer House

171 Monmouth Avenue

Block 726, Lot 24

Classification: Key

Reference: MTLC # 136; MCHSI #1331-4-25; NRHP Navesink District #2.

According to the National Register of Historic Places, this house was constructed in about 1820 and served at one point as the Navesink Post Office. This construction date is consistent with the materials and design of the 1-1/2 story vernacular house which appears to have been built in two sections, as evidenced by the different heights of the sections and the clapboard seam where the two meet. The eastern section is a 3-bay, side-hall plan; the western section is a 2-bay, side-hall plan. The first floor is sided with clapboard and the upper story is clad in round-butt shingles, common in Monmouth County. The foundation is constructed of stone. A shed-roof porch supported by simple, square-section supports, runs the length of the facade. It has exposed rafter ends and a wood floor, and would likely be an early 20th century replacement or addition. Three-light kneewall windows punctuate the frieze band of the eastern wing; double awning windows are located in the western portion's frieze band and 6/6 light, double-hung sash light the rooms of the first floor. Brick exterior chimneys are located at the east and west gable ends. A single-story wing is attached to the rear of the house.



NAVESINK HISTORIC DISTRICT

Site #49

Raoul House

175 Monmouth Avenue

Block 726, Lot 23

Classification: Contributing

Reference: MTLC #135; MCHSI #1331-4-27

This 1-1/2 story, 3-bay cottage is covered with clapboards and sits on a stone foundation. The house has a Greek Revival Style entry porch with square-section supports, square-section balustrade and a flat-roofed portico. Although the Greek Revival porch is of a style that dates from 1825-1860, the small size of the house and its simple materials make it possible that the house was constructed as early as the first quarter of the 19th century. Two gable-roof dormers decorated with notched vertical boards break into the gable roof on the facade. Six/six sash windows with simple surrounds are located throughout. Two exterior brick chimneys are located at the east and west gable ends. A single-story wing has been added to the rear of the house, and a small gable-roof, single-story wing is located at the west gable end. An arched-top wood gate above stone steps remains at the curb.



NAVESINK HISTORIC DISTRICT

Site #50

Mission Chapel of the Middletown Baptist Church, 1832-1853; Second Middletown Baptist Church 1853-1873; Navesink Baptist Church 1873-1893; Navesink Library 1914-1917

Monmouth Avenue

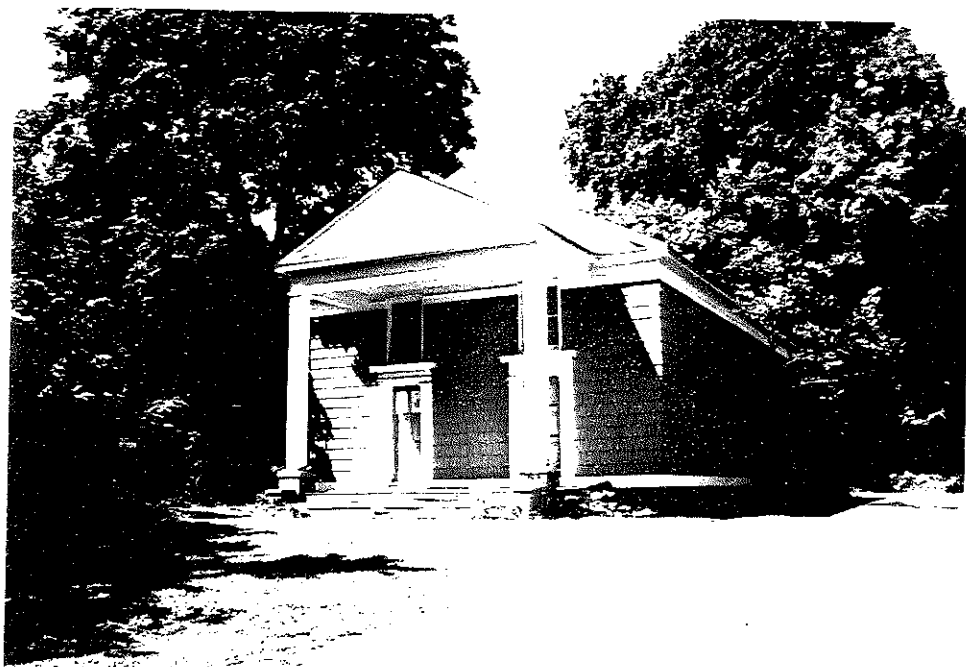
Block 726, Lot 23

Classification: Key

Reference: MTLC #133; MCHSI #1331-4-12; NRHP Navesink District

This Greek Revival structure has served the community in a number of capacities since its construction in 1832. According to the National Register of Historic Places, the structure was built on land deed by William Leonard, as a "Mission" of the Middletown Baptist Church, and in 1853 the congregation organized as an individual church, known as the Second Middletown Baptist Church. In 1893 the congregation merged with the Atlantic Highlands church, and no longer used the structure. It was used as the Township's first library from 1914 until 1917. It appears that the structure is not in use at the present time.

The Greek Revival style of the two-story building is seen in the front gable end, the square columned porch, and the wide molded frieze. The date of construction coincides with the years in which the style was most popular. Greek Revival style was the dominant architectural style 1830-1860. The building is sided with shingles and sits on a foundation of local stone. The symmetrical facade has two six-paneled doors surrounded by simple pilasters and two 6/6 sash windows flush above. A pedimented two-story porch with square vernacular Doric columns below a flash-boarded pediment shelters the entrance. A molded cornice with a wide frieze meets the roof. The front gable end is sheathed in flushboards and 12/12/12 sash windows are located on the side and rear elevations. Two wood gate posts, similar in style to the entry columns, and stone steps survive at the curb.



NAVESINK HISTORIC DISTRICT

Site #51

177 Monmouth Avenue

Block 726, Lot 22

Classification: Contributing

Like many of its Navesink neighbors, this two-story house with side gable roof is constructed in a three-bay arrangement. It has been enlarged with the addition of a single-story room across the front. In this case, the wing stretches beyond the edge of the older portion of the house, and the front is marked by three sets of paired 6/1 light windows separated by simple half-round columns. Three 6/6 sash windows are located directly below the wide frieze boards which become prominent gable end returns on the side elevations. A round arched, multi-light window highlights each attic gable. A few of the original louvered shutters remain and the house retains the original clapboards. An interior brick chimney is located on the west elevation.



NAVESINK HISTORIC DISTRICT

Site #52

Navesink General Store

101 Navesink Avenue

Block 726, Lot 21

Classification: Key

Reference: MTLC #127; MCHSI #1331-4-5

This 2-story structure was constructed in two phases as is evidenced by the break in the foundation and the two distinctly different sections of the building. The south portion, located on the corner of Navesink and Monmouth Avenues, is marked by a low-sloping gable roof with paired brackets below the molded cornice. The smaller north portion has a steeper gable roof and lacks the decorative bracketing. The Italianate style, which featured paired brackets and low-sloping roofs was most popular from 1850 until 1880; undoubtedly the larger section of the store was constructed during this period. The building is covered with horizontal boards, and a shed-roof porch on the west facade, over the storefront, is supported by kneebraces. Of interest are the molded recessed panels located below the display windows on the west facade. Frame stairs and porches are located at the first and second floors of the east elevation. Replacement 1/1 windows are located throughout. A convenience store remains in operation on the first floor with an apartment on the second floor.

The store is important in the development of Navesink as a commercial center in the 19th century. A general store was operational here in 1849, along with the post office, established in the village, known at that time as Riceville. Stephen B. Conover's appointment as the first postmaster relocated the commercial center of the town from Rice Hatsell's store, north on Navesink Avenue (Site #62), to Conover's store at the crossroads. The Italianate style section was probably added to an earlier building in the third quarter of the nineteenth century, to provide sufficient space for both the post office and general store.



NAVESINK HISTORIC DISTRICT

Site #53

105 Navesink Avenue

Block 726, Lot 20

Classification: Contributing

Reference: MTLC #128; MCHSI #1331-4-9

Based on its stylistic details, this two story, "L"-plan structure probably dates from the third quarter of the nineteenth century. The west portion has a low-sloping gable roof with a wide cornice; the east portion has a steep gable. Clad in clapboards, the structure sits on a concrete-parged foundation. A flat roof porch on the south facade is supported by square columns and shelters the entrance, which is located at the intersection of the two wings. A single-story bay window is placed on the west elevation at the first floor. Original moldings surround the original 2/2 sash windows all of which are flanked by functioning vertical-board shutters. One interior brick chimney pierces the northwest corner of the house and a second interior brick chimney exits the roof at the southeast corner. A two-story, center-gable carriage house, clad in shingles, is located at the rear of the property.



NAVESINK HISTORIC DISTRICT

Site #54

109 Navesink Avenue

Block 726, Lot 19

Classification: Contributing

The front elevation of this 1-1/2 story, side gabled structure has undergone some alteration. Three 6-light knee-wall windows are evenly spaced across the facade at the second level. The arrangement of openings at the lower level consists of a 6/6 light window located directly below the northernmost window, with a door and a four-unit bow window arranged haphazardly to the south. Both the door and wide window are protected by projecting shed roofs carried on knee brackets and false louvered shutters flank each window. The building is clad with unpainted shingles and a screened porch is located on the south side.



NAVESINK HISTORIC DISTRICT

Site #55

Tucker House

113 Navesink Avenue

Block 726, Lot 18

Classification: House: Contributing / Outbuilding: Non-contributing

Reference: NRHP Navesink Historic District #10; MTLC # 130; MCHSI #1331-4-2

According to the National Register of Historic Places, this house has served the community in a number of capacities since its construction. It has been used as a private residence, as the parsonage for the Methodist-Episcopal church across the street from 1862-1878, as a location for storing vegetables, and as a shoe store. The simple style of this vernacular house indicates that the earliest portion of the house could have been built as early as the last quarter of 18th century. Later additions appear to have been constructed during the first quarter of the 19th century. These dates are consistent with information given in the National Register of Historic Places Nomination Form, which dates the house to 1830 (or "possibly much earlier").

The north three bays of this 1-1/2 story saltbox appear to belong to a different building campaign than do the south two bays, as evidenced by both a stone and a brick foundation in different sections of the house and by the location of three pedimented dormers with 6/6 sash windows located over the three north bays. The National Register of Historic Places Nomination Form states that the house was originally one room deep; this presumably refers to the north section. Sided in clapboards, the gable-roof structure has an undercut porch running the length of the facade which is supported by turned columns. Modern replacement windows are located throughout. A frame garage is located behind the house.



NAVESINK HISTORIC DISTRICT

Site #56

117 Navesink Avenue

Block 726, Lot 16

Classification: Contributing

Reference: MTLC #131; MCHSI #1331-4-3

This two story, "T"-plan, cross-gable house is clad in new shingles and sits on a stone foundation. Based on its physical appearance, the structure appears to date from the mid-19th century. The placement of the house is of interest because the bottom of the "T" faces the street and the entrance is around the corner to the south. Paired 4/4 sash windows with original window surrounds are located at the first and second floors. A single-story hipped-roof porch with chamfered columns and a square section balustrade is located at the south intersection of the wings.

In 1878, the house became the parsonage for the Methodist Church, which stands across the street.



NAVESINK HISTORIC DISTRICT

Site #57

121 Navesink Avenue

Block 726, Lot 15

Classification: Contributing

This small 1-1/2 story cottage rests on a stuccoed foundation. The side gabled form is broken by a cross gabled portico projecting from the center of the facade and a shed roof wing is located at the north side. The building is covered with unpainted shingles, and the fenestration consists of 6/1 sash windows. A brick exterior chimney is located at the rear.

This is the site of Navesink's first school building. The front two rooms of this dwelling are reported to have been part of the fire house, and were moved to this site ca. 1944 to be used as a store.



NAVESINK HISTORIC DISTRICT

Site #58

Julia Stillwell House

125 Navesink Avenue

Block 726, Lot 14

Classification: Contributing

Reference: NRHP Navesink Historic District #7; MCHSI #1331-4-4

This 1-1/2 story "Jersey Deep Cottage," as described in the Monmouth County Historic Sites Inventory, is a vernacular form common to New Jersey. Although a construction date of 1900 is given in the National Register Nomination Form, the cottage form and the materials used indicate that this house could have been constructed as early as the first quarter of the nineteenth century. This offset three-bay, center entry house does not face the road; instead, its entrance is located to the south. The structure is sided in clapboards and sits on a concrete-parged, stone foundation. An undercut porch supported by simple chamfered columns runs the length of the facade. A dormer addition is located on the north elevation and has modern awning windows. Windows throughout are 6/6, with 2/2 sash windows at the attic level. Functioning panel shutters and a paneled front door are located on the facade. A brick chimney is located at the east gable end.



NAVESINK HISTORIC DISTRICT

Site #59

Cooper-Swan House

201 Hillside Avenue

Block 725, Lot 18

Classification: Contributing

Reference: NRHP Navesink Historic District #9; MTLC #385

The house is listed on the National Register of Historic Places as dating from c. 1815, which is consistent with its simple form and the small kneewall windows. This 1-1/2 story, 3-bay, gable roof house faces Hillside Street but also serves as a visual anchor for the view north on Navesink Avenue from Monmouth Avenue. Sided in clapboards, this structure sits on a stone foundation. A shed-roof wing is located at the rear of the house. A pedimented entry supported by simple square columns shelters the paneled center door, and a brick exterior chimney is located at the east gable end. Six/six windows are located throughout, with the exception of the small 3/3 windows at the attic level on the facade and the louvered windows which are located at the northeast corner of the first story. Functional shutters are located throughout the structure: paneled at the first floor; louvered at the second.



NAVESINK HISTORIC DISTRICT

Site #60

124 Navesink Avenue

Block 712, Lot 18

Classification: Contributing

Reference: MTLC #287; MCHSI #1331-4-8

This 2-1/2 story, 3-bay house was constructed in the Queen Anne style which was popular during the last quarter of the nineteenth century and featured wrap-around porches supported by turned posts and textured shingles as the preferred siding material. This house is sided with shingles and sits on a brick foundation. The east gable end faces the street and has a side-hall plan within the "L"-plan of the house. Cove shingles are located at the attic level, surrounding a small sash window located beneath the wide molded eaves. A belt course encircles the house between the first and second stories. A porch with turned posts and a square-section balustrade wraps around the east and north elevations. A paneled half-glass entrance door is sheltered by this shed-roof porch. A 2-story bay window is located on the north elevation and a single-story bay window is located on the south elevation at the first floor. Functional louvered shutters are located throughout. One/one replacement windows are located at the first floor. A mature tree in the front yard appears to be contemporary with the house.



NAVESINK HISTORIC DISTRICT

Site #61

120 Navesink Avenue

Block 712, Lot 19

Classification: Contributing

Reference: MTLC #286; MCHSI #1331-4-7

This 2-1/2 story, 3-bay, Queen Anne Style house is sided with shingles. This style was popular from 1880 until about 1910 and featured wrap-around porches supported by turned posts and textured shingles as the preferred wall siding. The east gable end of this house faces the street and has a side-hall plan within the "L"-plan of the house. Shingles are located at the attic level, surrounding a small, pointed 2/1 window beneath the bargeboards. A shed-roof porch with turned posts, jigsaw brackets, square-section balustrade, and wood floor wraps around the east and north elevations. The steps to the porch and retaining wall are constructed of local peanut stone. One/one replacement windows are located on the first and second floors and functional louvered shutters are located throughout. A single-story shed-roof wing with a brick chimney is located at the rear of the house.



NAVESINK HISTORIC DISTRICT

Site #62

Rice Hatsell's Store

116 Navesink Avenue

Block 712, Lot 20

Classification: Key

Reference: NRHP Navesink Historic District #4; MTLC #390; MCHSI #1331-4-7

The proprietor of this former general store gave Riceville its name. Constructed c. 1830, according to the National Register of Historic Places Registration Form, the original structure has undergone numerous alterations over time. While the form of the house is simple, consistent with an 1830 construction date, Victorian details such as the remains of a bargeboard, jigsawn brackets, notched rafter ends, and the square-section porch balustrade imply that the house was updated in the last quarter of the 19th century. This 2-story, 3-bay house is sided with shingles at the attic level, ship-lap boards at the second floor, and sits on a scored concrete foundation that also forms the first floor. The concrete may cover a stone foundation underneath. The east gable end faces the street. The first floor contained the store and the second floor was reserved for the living quarters. Six-light box windows on the first floor flank a paneled center entry door with sidelights. The second floor has two windows and an entrance onto the second-story porch. The shed-roof porch is supported by simple supports that extend to the ground and has a square-section balustrade and jigsawn brackets. One/one replacement windows are located throughout, except for a 2/2 window at the attic level. Original window surrounds remain throughout. A brick chimney rises from the center of the house.



NAVESINK HISTORIC DISTRICT

Site #63

Navesink United Methodist Church (Riceville Methodist-Episcopal Church)

112 Navesink Avenue

Block 712, Lot 21

Classification: Key

Reference: MTLC #38; MCHSI #1331-4-6
3%

This 2-story, cross-gable Gothic Revival church is covered with synthetic siding and sits on a brick foundation. The structure has an irregular plan, with numerous projections and the main portion is covered by a steeply-pitched roof. A circular leaded glass window is placed at the second floor level and a bargeboard with a quatrefoil design is located at the peak. A single-story shed-roof massing with a center gable is located at the east elevation. At the center of this addition a large traceried window fills the first floor and gable; smaller lancet windows are placed throughout the first floor elevations. The bell tower, located at the southeast corner of the structure, contains the main, double-leaf entry. A traceried lancet window is located above the doors. At the second story a circular leaded glass window is located on each elevation. The third story has trefoil and quatrefoil detailing above the louvered openings at the bell-tower level. A steeple rises from the top of the tower with square, squat minarets at each corner. A 20th century gable-roof wing is located at the south elevation.

The present building was constructed in 1889 on the foundations of the congregation's first structure. The elaborately decorated Gothic Revival church is consistent with architectural taste of the last quarter of the 19th century, and a far cry from the "simple meetinghouse" which was organized by Rev. Bromwell Andrew and stood on the site from 1853 until 1889.



NAVESINK HISTORIC DISTRICT

Site #64

Methodist Parsonage

108 Navesink Avenue

Block 712, Lot 22

Classification: Key

Reference: MTLIC # 126; MCHSI #1331-4-11

This cottage is an excellent adaptation of the popular, mid-19th century designs of A. J. Downing. The 1-1/2 story, gable roof, 3-bay house has a projecting center gable and is sided with clapboards. Gothic Revival elements are seen in the hood-molded pointed attic window, and the steeply-pitched center gable and roof. A single-story porch, with a center gable echoing the gable above, runs the length of the facade and is supported by turned columns and jigsaw brackets. A square section balustrade encloses the porch. Diamond-shaped shingles adorn the porch gable. Original 2/1 windows and window surrounds remain, flanked by operable louvered shutters. Of special note is the round-paneled double entry door framed by rope molding and a transom light. A brick chimney is located at the north gable end. The garden setting is appropriate to the period of the design of the house.

The cottage was built as the parsonage for the Methodist Church between 1854 and 1878. Church records show that it was built by local carpenter Joseph Leonard. The Gothic Revival style, with its explicitly Christian associations, was a popular choice for churches and parsonages in the mid-19th century. In near-by Colts' Neck, the Reformed Church congregation also built a Gothic Revival style parsonage, very similar to this one, in 1857.



NAVESINK HISTORIC DISTRICT

Site #65

Dr. LaBaw House

104 Navesink Avenue

Block 712, Lot 23

Classification: House: Contributing / Garage: Non-contributing

Reference: MTLC #125; MCHSI #1331-4-10

This 2-1/2 story, 3-bay house was constructed in the Shingle Style, which was most popular from 1880 to 1900. The east gable end faces the street and has a side-hall plan within the "L"-plan of the house. A 2 1/2 story tower with flared eaves forms the southeast corner of the house. Fish-scale shingles surround a 1/1 window at the attic level, and the remainder of the house is clad with conventional cedar shingles. A shed-roof porch designed with simple tapered columns, a shingled balustrade, and a wood floor wraps around the east and south elevations. The original door frame with appropriate multi-light door remains. One/one windows are located throughout. The retaining wall along the street and a street-side, single-car garage are constructed of rusticated concrete block.



NAVESINK HISTORIC DISTRICT

Site #66

J. M. Johnson House

179 Monmouth Avenue

Block 712, Lot 24

Classification: Key

Reference: NRHP Navesink Historic District #8; MTLC #124; MCHSI #1331-4-30

This 2-story, 5-bay, clapboard-sided house contains Italianate features that date it to the mid-19th century. These features were most popular 1840-1880, which is consistent with the c. 1840 date given in the National Register of Historic Places Nomination form. This gable-roofed house is accented by paired brackets located beneath the roof and porch eaves. The house is laid out in a symmetrical, center-hall plan with double, paneled doors and a transom above. A single-story porch supported by chamfered columns shelters the three center bays. Segmentally arched window surrounds are located on the facade; simple surrounds are located on the other elevations. Heavy arched lintels accent the original 2/2 windows and functioning louvered shutters remain on all elevations. An exterior brick chimney rises at the west gable end, and an interior brick chimney pierces the east gable end.

The house was owned by J. M. Johnson in the mid-19th century, who operated a drug store in the village. His business was one of several which contributed to the growth of Riceville, later called Navesink, into the largest village in the area.



NAVESINK HISTORIC DISTRICT

Site #67

181 Monmouth Avenue

Block 712, Lot 25

Classification: Non-contributing

This ranch house, constructed circa 1968, is reached by a long sloping drive, and is therefore not visible from the street. The single story, main block is covered with stone veneer while the remainder of its telescoping form is clad with synthetic siding.



NAVESINK HISTORIC DISTRICT

Site #68

181 Monmouth Avenue

Block 712, Lot 25

Classification: Contributing

Vacant land attached to Site #67 which contributes to the historic setting of the district.

NAVESINK HISTORIC DISTRICT

Site #69

William Henry Posten House

183 Monmouth Avenue

Block 712, Lot 26

Classification: Key

Reference: MTLC #122; MCHSI #1331-4-32

This 2-1/2 story, early 19th century, vernacular style embanked house was updated later in the 19th century with Italianate features. The structure is covered with clapboards and sits on a stone foundation. The center portion is three stories tall, and is a 3-bay, side gable structure with a side-hall plan. A flat-roof, single-story entry porch, supported on square columns, protects the front door. Window architraves in the central section are simple at the first floor, heavier architraves with dentils are located at the second floor. Small 3-light awning windows are located in the wide friezeband. The 2-story east wing with a 2 story bay window is a later addition and dates from 1892. The 2-story wing to the west is also a late 19th c. addition. Six/six windows are located on all elevations. Functioning louvered shutters are located on the facade. A brick chimney rises from the northwest corner of the house.

The house was built by George Davis for William Henry Posten, a blacksmith, and it remained in the Posten family until 1996. The blacksmith's shop was not on this site, but moved from Chapel Hill to the southwest corner of Monmouth and Navesink Avenues in 1852. The house was bought by Therese and Geoffrey Johnson in 1996 who have conducted a complete and handsome restoration of this important Navesink landmark.



NAVESINK HISTORIC DISTRICT

Site #70

185 Monmouth Avenue

Block 712, Lots 27

Classification: Contributing

This is an imposing 2-1/2 story, L-plan structure, with a gabled wing facing the street. The front section of the house is designed in the three-bay, side hall arrangement, the rear section is a side gabled wing to which numerous single story additions, including a garage, have been appended. Vinyl siding covers the entire building which is capped with an asphalt shingle roof. The original fenestration has been replaced with new 6/6 windows at the upper levels and a large picture window highlights facade at the ground floor. Enclosing the facade and the side elevation is a single-story porch, elevated on brick plinths; the porch roof is carried on simple Tuscan columns. A brick chimney rises from the center of the front wing.



NAVESINK HISTORIC DISTRICT

Site #71

187 Monmouth Avenue

Block 712, Lot 28

Classification: House - Non-contributing / Land - Contributing

Reference: MTLC #120

A long, unpaved driveway leads to a contemporary split-level house (circa 1973) that sits atop a rise overlooking the surrounding area. The two-story main block of the house is clad in shingles and to the south is located a single-story wing constructed of brick. A brick chimney is located at the juncture of the two wings.

The land has been classified as contributing because it provides a rural setting to the district.



NAVESINK HISTORIC DISTRICT

Site #72

193 189 Monmouth Avenue

Block 712, Lots 29, 30

Classification: Contributing

original house condemned, demolished 2017

This 1-1/2 story, 3-bay cottage is clad with shingles and exhibits numerous Queen Anne Style details. The cross gable house has a 6-light, paneled entry door located at the center. Variegated fishscale, cove, and round-butt shingles are located at the attic level of the gable end. A shed-roof porch supported by circular columns runs the length of the gable end facing the street. Original 2/2 windows are located at the first floor; replacement 1/1 windows are located at the second floor. A single-story gable-roof wing is located at the east gable end of the house. A brick chimney rises from the center of the roof.



NAVESINK HISTORIC DISTRICT

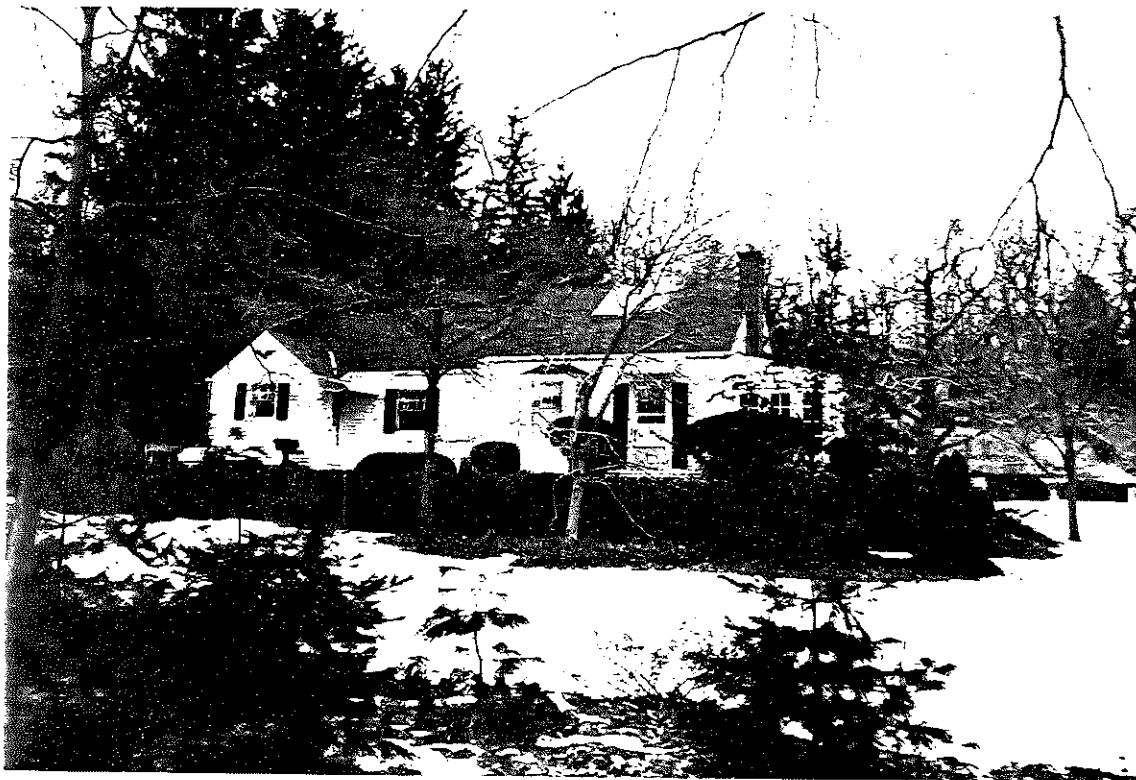
Site #73

191 Monmouth Avenue

Block 712, Lot 31

Classification: Non-contributing

This Cape Cod style house was constructed circa 1949. Located quite a distance from the street, the front elevation is marked by a retaining wall constructed of the local peanut stone. The gable roof is covered with asphalt shingles and the body of the house is sided with vinyl. The multi-light windows are flanked by false louvered shutters, and an exterior brick chimney rises at the east side.



NAVESINK HISTORIC DISTRICT

Site # 74

William Davis House

193 Monmouth Avenue

Block 712, Lot 33

Classification: Key

Reference: NHRP - Navesink District Site #6; MTLC #117

This 2-story, 5-bay house with Greek Revival details rests on a stone and brick foundation and is sided with clapboards. The center entrance is framed by a simple entablature above Ionic pilasters and a transom is located above the paneled door. Six/six window framed by screw-on shutters are located on all elevations. An interior brick chimney is located in each gable end. Attached to the rear of the house are one- and two-story wings. A small columned porch is located at the southeast corner of the house.

In 1835 John Davis deeded to his two sons, Obadiah S. (See Site #75) and William S., identical pieces of property on the north side of the "Public Highway," now today's Monmouth Avenue. Each lot, 2-52/100 acres in size, was purchased for \$5.00. William, along with his brothers Joseph and Obadiah, was a leading carpenter and craftsman in early 19th century Middletown Township. William was the likely builder of this house.



NAVESINK HISTORIC DISTRICT

Site #75

197 ~~1934~~ Monmouth Avenue

Block 712, Lot 32

PN 118

Classification: Contributing

A two-story, side gabled house with a single-story wing attached to the east side. The four original 2/2 windows have been retained across the second level of the main block, and the entryway is located directly below the easternmost window. However, the fenestration at the lower level consists of three new multi-light windows grouped together at the west side of the facade. A screened porch encloses the front of the adjoining wing, and both sections are clad with horizontal novelty siding.



NAVESINK HISTORIC DISTRICT

Site #76

195 Monmouth Avenue

Block 712, Lot 34

Classification: House - Contributing / Outbuilding - Non-contributing

Reference: MTLC #116

This building was formerly a barn on the Obadiah Davis property (Site #77) which was subdivided in 1934 from the original 2-52/100 acre tract sold by John Davis to his son in 1835 for \$5.00. The barn may have been constructed by Obadiah, a carpenter, at this time.

The 1-1/2 story cottage has a center entrance framed by sidelights and a transom in the Greek Revival Style. This style was most popular 1825-1860, although the doorway may well be an addition to a much earlier house. Sided in clapboards, the house sits on a stone foundation. A mid-19th century flat roofed porch with brackets shelters the front door. Modern windows are located west of the entrance on the facade. Three kneewall windows are tucked under the eaves. A single-story wing with a wall dormer is attached to the east gable end of the house. Three 2/2 windows are located on the south elevation of the wing. An early-20th century bracketed entry is located on the east elevation. Non-functioning screw-on shutters are located on all elevations.

A non-contributing, vertical board frame shed is located northeast of the house.



NAVESINK HISTORIC DISTRICT

Site #77

Obadiah S. Davis House

203-199 Monmouth Avenue

Block 712, Lot 35

Classification: Contributing

Reference: NRHP - Navesink Historic District Site #5; MTLC #115

In 1835 John Davis deeded to his two sons, Obadiah S. and William S., identical pieces of property on the north side of the Public Highway. Each lot, 2-52/100 acres in size, was purchased for \$5.00. Obadiah, along with his brothers Joseph and William, was a leading mechanic and craftsman in early 19th century Middletown Township.

This 1-1/2 story Greek Revival cottage has a paneled door framed by sidelights and a transom. This style was most popular 1825-1860. Covered with synthetic siding, the side hall plan house sits on a stone foundation. Replacement 1/1 sash windows are located at the facade, with kneewall windows located beneath the eaves. A single-story wing is located to the east of the house and has a picture window in the south elevation. Non-functioning shutters are located on all elevations. Sizable boxwood hedges screen the house from the road.



NAVESINK HISTORIC DISTRICT

Site #78

Joseph Maxson House

112 Lakeside Avenue

Block 791, Lot 8

Classification: Contributing

This is a 1-1/2 story, side gabled house with gable end returns and a shed-roof addition at the east. The house is located perpendicular to the road and a hip-roofed porch supported on four Tuscan columns covers the first floor of the main block. The main entry is located at the west side of the building and the fenestration at the lower level consists of a wide picture window flanked by false paneled shutters. Two square knee-wall windows are located at the upper floor of the facade, and 6/6 sash windows are located on the west elevation. A brick chimney is located at the east side, and the house is clad with vinyl siding.

At the rear of the property is a garage/apartment that appears to date from the turn of this century. It has a side gable roof clad with asphalt shingles, and the body of the building is covered with painted wood shingles. A ventilator with a weather vane is located at the center of the roof. A new double-width garage door has been installed above which are two multi-light windows. Two original openings have been covered with shingles.

A well house is located at the front of the house. The hip roof, which is clad with asphalt shingles, is supported on square posts and the base is covered with vertical siding.



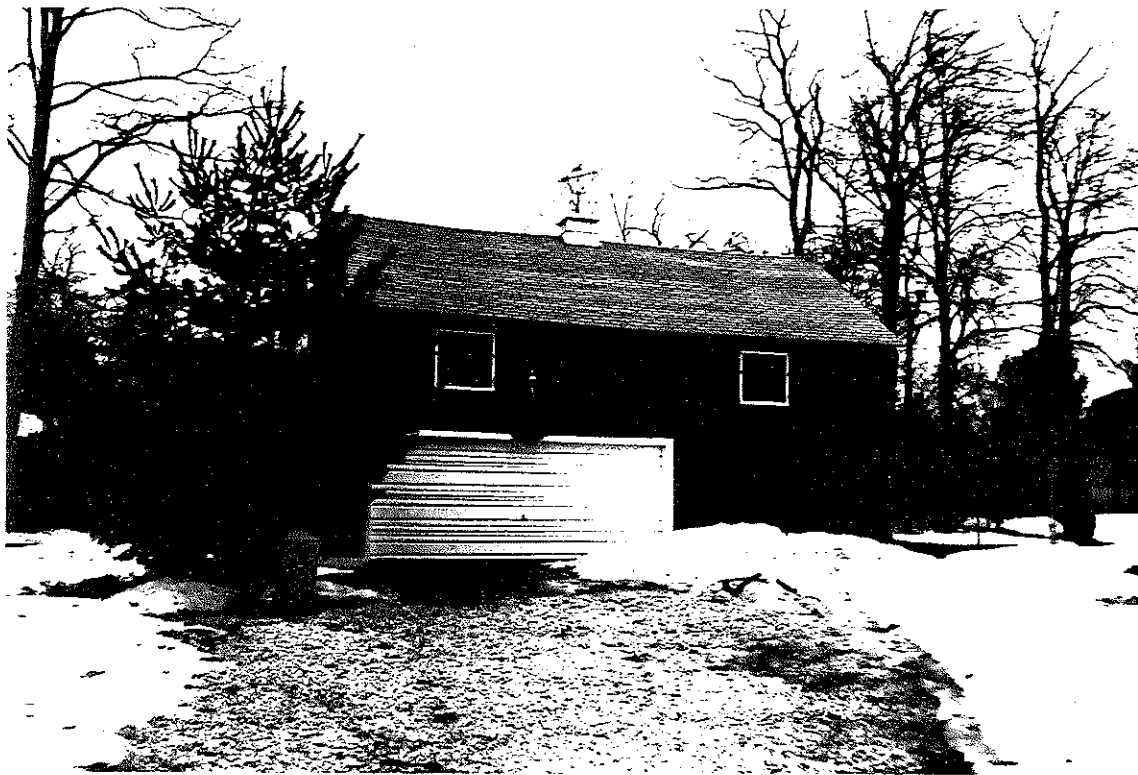
NAVESINK HISTORIC DISTRICT

Site #78, continued

112 Lakeside Avenue

Block 791, Lot 8

Classification: Contributing



NAVESINK HISTORIC DISTRICT

Site #79

105 Lakeside Avenue

Block 840.04, Lot 10

Classification: Non-contributing

This facade of this small bungalow is marked by a shed roof porch which is carried on square posts ornamented with jig-sawn brackets. Above this is a prominent shed dormer that extends the length of the house and contains a plate glass window flanked by 1/1 light windows with shutters on either side. At the first floor the entry is located at the north side of the facade, with a plate glass window to the south. Vinyl siding covers the exterior.



NAVESINK HISTORIC DISTRICT

Site #80

111 Lakeside Avenue

Block 840.04, Lot 11

Classification: Contributing

This charming 2-1/2 story, Shingle Style house appears to date from the last quarter of the nineteenth century. The essentially square plan is dominated by a cross gable roof highlighted with prominent gable end returns. The ceiling levels of the second and attic floors are marked on the exterior by narrow belt courses which appear in contrast to the shingle-clad body of the structure. A prominent porch shelters the facade and the south elevation and continues to the north where it becomes the porte cochere. Across the facade, the porch roof, which is clad with interlocking shingles, is supported on short Tuscan columns that rest on wooden piers. The space between each column is spanned by an ornamental, flat-sawn balustrade. At the porte cochere the roof is supported by full height, paired Tuscan columns supported on a low brick plinth. Wide steps lead from the front yard to the porch and the entry is marked by a pedimented portico. The fenestration throughout consists of paired and single 2/2 and 1/1 sash windows and the house rests on a brick foundation.



NAVESINK HISTORIC DISTRICT

Site #81

103 Division Street

Block 840.04, Lot 12

Classification: Contributing

Constructed in the style so popular throughout the Navesink area, this is a two-story, three-bay, center hall structure with a side gabled roof. For increased space, a shed addition has been appended to the rear. The pedimented entry portico is supported on paired posts with cross-braced webbing between them. Fenestration consists of 6/6 double-hung sash windows and 3-light basement windows are barely visible above grade in the stone walls of the foundation. Attached to the west side of the house is a two-car garage with a gable roof. Both the house and the garage are clad with painted shingles.



NAVESINK HISTORIC DISTRICT

Site #82

107 Division Street

Block 840.04, Lot 13, 14

Classification: Contributing

The earliest section of this house appears to be the two-story wing located at the west side, the gable end of which faces the street. Attached to this at the east side is a one-story wing with a side gable roof and a recessed entry. The $2\frac{1}{2}$ windows of the older section are topped with prominent drip caps and those on the facade are flanked by board and batten shutters. The house is clad with unpainted shingles and a grade-level, cellar entry is located in the original wing.



NAVESINK HISTORIC DISTRICT

Site #83

109 Division Street

Block 840.04, Lot 15.01

Classification: Non-contributing

This is a single-story ranch house with a garage attached to the west side. The house has a gable roof, is clad with vinyl siding, and exhibits multi-light windows across the facade. A boxed chimney is located at the west end.



NAVESINK HISTORIC DISTRICT

Site #84

115/117 Division Street

Block 840.04, Lot 17

Classification: Non-contributing

This two-story gabled house is marked by a random assortment of fenestration types. At the lower level is a bank of three narrow 1/1 windows, and above this is a wide 1/1 window flanked by false louvered shutters. Also at the second level, above the front door, is a small rectangular window placed high in the exterior wall. A shed roof supported on turned columns shelters the first floor of the facade which is clad with stone veneer. The remainder of the structure is covered with vinyl siding.

At the rear of the lot, behind a fence, is a small one-story, stuccoed house. Essentially "L" shaped in plan, the juncture of the two sections is marked by a recessed entry covered with a shed roof. A wide picture window comprises most of the front gable end, while the second wing is marked by a door and a 1/1 window.



NAVESINK HISTORIC DISTRICT

Site #84, continued

115/117 Division Street

Block 840.04, Lot 17

Classification: Non-contributing



NAVESINK HISTORIC DISTRICT

Site #85

119 Division Street

Block 840.04, Lot 18

Classification: Non-contributing

Other than its basic form, little of the historic character of this building remains. "L"-shaped in plan with a two-story, side gabled wing attached to the 2-1/2 story front gable wing, the house has been clad with synthetic siding. None of the original fenestration remains, having instead been replaced with a variety of new windows of all sizes and configurations. A brick chimney for the furnace rises prominently up the front elevation and a shed roof protects the front door, which is located in the front gable end.



NAVESINK HISTORIC DISTRICT

Site #86

121 Division Street

Block 840.03, Lot 4

Classification: Contributing

Over the years this 2-1/2 story house has undergone numerous expansions yet the historic fabric remains almost entirely unaltered. Now the house is comprised of two cross gabled wings creating a roughly "L"-shaped configuration, which has been infilled with a shed roof addition, so that the house now has a nearly square footprint. The earliest portion of the structure consists of the three bays at the west side of the front elevation. The fenestration throughout this section consists of 2/2 sash windows; 6/1 units have been installed in the later sections of the building. The entire structure is clad with horizontal wood siding. A shed roof carried on turned posts shelters the width of the lower level of the facade and a gabled portico supported on knee brackets covers the entry on the east elevation.



NAVESINK HISTORIC DISTRICT

Site #87

9 Sears Avenue

Block 734, Lots 24

Classification: House - Contributing / Outbuildings - Non-contributing

The roof is the primary focus of this small cottage; both the primary side gabled roof and that of the shed dormer are conspicuous for their use of asphalt shingles wrapped over the eaves in imitation of thatching. At the center of the front elevation is the front door which is flanked by paired 6/1 sash windows. Two jalousie windows are located in the wide dormer and the exterior is sided with unpainted wood shingles.

The small workshop and garage located on the property are non-contributing.



NAVESINK HISTORIC DISTRICT

Site #88

13 Sears Avenue

Block 734, Lot 23

Classification: Non-contributing

Dating from the middle years of this century, this Cape Cod style house is capped by a steep gable roof covered with asphalt shingles. An assortment of fenestration styles marks the facade, and all are flanked with screw-on shutters. A one-car garage is attached to the north side and synthetic siding covers the exterior of the entire structure.



NAVESINK HISTORIC DISTRICT

Site #89

21 Sears Avenue

Block 734, Lot 22

Classification: Contributing

This charming bungalow, which appears to date from the 1920s, is capped by a hipped roof covered with interlocking shingles. A pair of symmetrically placed hipped dormers is located on the front slope of the roof, which is broken at the center by a gabled pediment, marked by a vertically-oriented, 12-light casement window at the center. The porch roof is supported on four Tuscan columns, and the open porch balustrade is comprised of square-section balusters. As this balustrade approaches the steps at the centered opening, it sweeps gracefully down to a shorter height where it ends at a short plinth. The center portion of the house projects slightly and is marked by a doorway at one side with two 1/1 sash windows on the other. On either side of this, the building steps back and the walls are highlighted by paired 1/1 windows. The building is clad with painted shingles.



NAVESINK HISTORIC DISTRICT

Site #90

23 Sears Avenue

Block 734, Lot 21

Classification: Non-contributing

The hipped roof of this 1-1/2 story house is capped by a prominent shed dormer. Because of the high basement, open wooden steps lead to the centrally located front door. The facade is clad with aluminum siding and marked by single and paired 1/1 windows.



NAVESINK HISTORIC DISTRICT

Site #91

25 Sears Avenue

Block 734, Lot 20

Classification: Non-contributing

Located behind a white picket fence is this odd two-story house. Viewed from the front, the north half of the building is capped by a shed dormer with two windows, while the southern half steps up slightly to form a separate gabled portion. Hard by the right of the front entry, which is located near the center of the facade, is a pair of windows with false muntins. At the north end of the facade is a pair of larger windows of the same type. Vinyl siding covers the exterior and a chimney for a furnace rises at the rear.



NAVESINK HISTORIC DISTRICT

Site #92

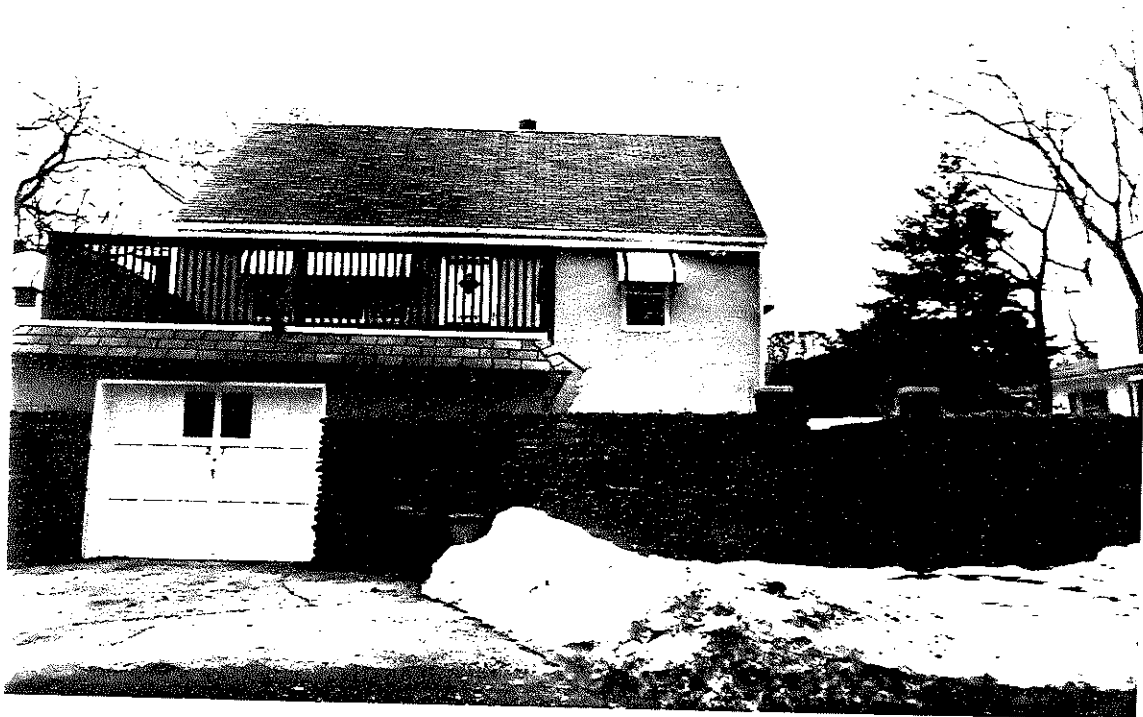
27 Sears Avenue

Block 734, Lot 19

Classification: Non-contributing

Two houses are located on this property. The first, which sits close to the road, is constructed behind a retaining wall of the local peanut stone. This wall is incorporated into the front wall of the garage and is broken to allow for the garage door. The flat roof of the garage serves as a front deck for the house. Behind the garage/deck is a single-story residence with a gable roof. At the center is the front door with windows on either side that are capped with aluminum awnings. The exterior walls are finished with stucco.

At the rear of the property is a small, 1-1/2 story house. The roof is marked by two prominent gabled wall dormers and the lower level contains the entry door and one 1/1 window. The walls are stuccoed.



NAVESINK HISTORIC DISTRICT

Site #92, continued

27 Sears Avenue

Block 734, Lot 19

Classification: Non-contributing



NAVESINK HISTORIC DISTRICT

Site #93

28 Sears Avenue

Block 726, Lot 47.02

Classification: Contributing

This 2-1/2 story house is sited with its gable end to the road. A shed roof addition is located at the west side of the building and a two-story shed addition is at the rear. What appears to have originally been a three-bay, side hall house has been enlarged by the addition of an extra bay which places the building quite close to the street. A shed roof portico covers the front door and the original fenestration has been replaced with new 1/1 units, arranged singly and in pairs. The exterior is clad with asbestos shingles above a stuccoed basement.



NAVESINK HISTORIC DISTRICT

Site #94

24 Sears Avenue

Block 726, Lot 46

Classification: Contributing

Separated from the street by a wire fence with a wooden gate, this vernacular Shingle Style house retains much of its original fabric. The strongly vertical, 2-1/2 story building was constructed with the gable end facing the street. The lower story is protected by a shed roof porch supported on turned columns highlighted by scrolled brackets. Fish scale shingles ornament the attic gable and the remainder of the house is clad with unpainted shingles. The original elongated 2/2 sash windows remain, flanked by louvered shutters.



NAVESINK HISTORIC DISTRICT

Site #95

20 Sears Avenue

Block 726, Lot 44

Classification: Contributing

Located behind a picket fence, this 5-bay, 2-1/2 story house is capped by a gable roof broken by a centered cross gable in the Gothic Revival Style. A shed-roof porch supported on square section posts, protects the lower level of the house. The centered doorway is ornamented by a wide architrave and is flanked on either side by two 2/2 sash windows. The five-bay arrangement of the lower level is altered to become three bays at the upper floor. An interior brick chimney rises on the north elevation.



NAVESINK HISTORIC DISTRICT

Site #96

18 Sears Avenue

Block 726, Lot 43

Classification: Contributing

This house shows evidence of having evolved during a number of separate building campaigns. The earliest portion appears to be the 1-1/2 story, three-bay section at the south end. The side gable portion exhibits six-light knee-wall windows at the upper level and 6/6 double-hung sash windows below. Added to this is a two-story, cross gable addition at the north end. Two 6/6 double-hung sash units light the second level, and all of the visible windows are flanked by false shutters. The lower level of the facade is sheltered behind a hip roofed, screened porch that obscures much of the fabric of the building, as well as the sequence of openings at the lower level. The house is clad with synthetic siding and an interior brick chimney rises at the north end. Five gate posts constructed of the local peanut stone are located at the street edge of the property.



NAVESINK HISTORIC DISTRICT

Site #97

Baptist Church Parsonage

230 Monmouth Avenue

Block 837, Lot 27

Classification: Contributing

Reference: MTLR #107

The original appearance of this large, three-story house has been substantially altered. Over the years the three-bay organization of the gable facade has been modified by the construction of a new entrance that is concealed behind a short piece of stockade fence. The single-story front porch has been enclosed, additions have been constructed at either side and a garage is connected to the west side of the house. Synthetic siding covers the exterior and new windows, flanked by false shutters, have been installed.

"Baptist Parsonage" is shown on the 1873 Beers and 1889 Wolverton Atlas maps of Navesink, on the southwest corner of Monmouth Avenue and Browns Dock Road. When the Baptists in Navesink decided to form their own church, instead of going all the way to Middletown Village, they first built a "Mission" Chapel (see Site #50). By 1853 the congregation organized as an individual church, known as the Second Middletown Baptist Church. In 1868, the Trustees of the Church bought this property from George B. Davis, a member of the Davis family who were the leading carpenters and craftsmen in 19th century Navesink. There was a house on the lot, the possible nucleus of the present much altered structure. It was the Parsonage until 1893 when it was sold to the Central Baptist Church. At this time the congregation merged with the Atlantic Highlands Church. Central Baptist sold the property in 1896, thus ending this property's use as a parsonage.



NAVESINK HISTORIC DISTRICT

Site #98

155 Brown's Dock Road

Block 840, Lot 1

Classification: Contributing

Reference: MTLC #172

This 2-1/2 story house retains much of its original appearance and detailing. The gable end, complete with returns and wide fascia board, faces the street and the facade is completed with a single-story porch across the full width. The exterior is clad in painted shingles and the windows are 1/1 sash. A multi-paned diamond-shaped window is located near the front door, asphalt shingles cover the roof and a brick chimney rises from the center of the building.

This house appears to have been built as a summer home by residents of New York City, Ada and Oscar Gardner, who could have travelled conveniently by steamboat to Mounts Dock at Locust Point. In 1883, the Gardners bought 2 acres of land from Theodore Davis, who was a member of the Davis family of carpenters and craftsmen. There may have been an existing house on the property built by Davis, and replaced by the Gardners circa 1900 with the present house. It remained in the Gardner family until 1940.



NAVESINK HISTORIC DISTRICT

Site #99

Henry Saddler House

224 Monmouth Avenue

Block 840, Lot 2

Classification: Contributing

Reference: MTLC #172

The size of this 1-1/2 story house and the small scale of the four-light windows at the upper level indicate that it may predate many of the other buildings in the area. The facade is organized in a three-bay arrangement with a centrally-located entrance capped by a pedimented entry portico carried on simple columns with Ionic capitals. A 1-1/2 story addition has been constructed at the west side and a stone chimney is located at the east end. Fenestration at the lower level consists of paired multi-light sash, and all windows are flanked by rustic plank shutters.

In 1833, Henry Saddler paid \$150 to Edmond Woodward for 10 acres of land in Navesink along the "Highway." Henry Saddler's house appears on the 1869 road return map for Riceville (Road Book G, page 381). It also is indicated on the 1873 Beers and 1889 Wolverton Atlas maps of Navesink. According to local history, it was built by a member of the Davis family of carpenters who were well known locally for their craftsmanship. The property remained in the family until 1893 when it was sold by Henry Saddler's son, Thomas Henry Saddler, to William H. Posten, the village blacksmith.



NAVESINK HISTORIC DISTRICT

Site #100

222 Monmouth Avenue

Block 840, Lot 3

Classification: Contributing

Reference: MTLC #170

Although the core of this building consists of an historic barn, much of what is visible dates from the latter portion of the twentieth century. The house consists of a 2-story block with a single-story wing and garage located to one side. The exterior is clad with vinyl siding, and the multi-light windows are flanked by inoperable shutters.

This house was originally the barn for the adjacent property, the Henry Saddler house (see Site #99). It was subdivided by Ethel Mae and Charles Allaire of Shrewsbury in 1949 when they sold the barn property to Blanche and Frederick Kling.



NAVESINK HISTORIC DISTRICT

Site #101

220 Monmouth Avenue

Block 840, Lot 4

Classification: Non-contributing

Reference: MTLC #169

This linear, single-story Ranch style house appears to be of late 50's vintage. The exterior is clad with synthetic siding and the gable roof is covered with asphalt shingles. A brick chimney is located at the center of the structure.

This house was built in 1960 on land which had been part of the dairy farm operated by Adam R. Linzmayer, Sr., known as the Meadowbrook Dairy Farm (see Site #1).



NAVESINK HISTORIC DISTRICT

Site #102

220 Monmouth avenue

Block 840, Lot 5

Classification: Contributing

This is vacant land, formerly the site of the Meadowbrook Dairy Farm, which contributes to the rural, historic setting of the district.

NAVESINK HISTORIC DISTRICT BIBLIOGRAPHY

- Beers, Comstock & Cline, Atlas of Monmouth County (1873)
- Brown, Walter LeRoy, The Descendants of John Maxson and Wife Mary Mosher of Westerly, Rhode Island (1954)
- Conover, Elias, "Middletown Duplicate for 1798" (on loan to Monmouth County Historical Association, Freehold)
- Ellis, Franklin, History of Monmouth County (Reprinted 1974, Shrewsbury Historical Society)
- Federal Census, 1860, on microfilm, New York Public Library
- Guter, Robert P. and Foster, Janet W., Building by the Book (1992)
- History of Monmouth County, 1664-1920, Vol. III, Lewis Publishing Co., 1922
- Hunton, Gail and McCabe, James C., Monmouth County Historic Sites Inventory (1980-1984)
- Leonard, Thomas Henry, From Indian Trail to Electric Rail, (1923)
- Jesse Lightfoot, Map of Monmouth County, 1851
- McAlester, Virginia and Lee, A Field Guide to American Houses (1991)
- Middletown Landmarks Commission Files
- Monmouth County Roads, Book G, Hall of Records, Freehold, N.J., p. 381
- Moss, George H., Jr. Steamboat to the Shore (1966)
- Red Bank Register, on microfilm, Middletown Public Library
- Stillwell, John E., M.D., Historical and Genealogical Miscellany, (originally published 1903, reprinted 1984)
- Wolverton, Chester, Atlas of Monmouth County (1889)